

363 W BIG BEAVER

OFFICE SPACE
FOR LEASE

TROY, MI



AVAILABLE:

Suite 235 - 2,269 SF

USE:

Office

LEASE RATE:

Suite 235: \$21.00/ SF/ YR, Gross + Electric

JOIN TENANTS:

Main Street Bank, Fast Braces, Infusion Associates, IPS Technology Solutions, and more.

LOCATION:

Easy access on W Big Beaver Road across from new DMC Children's Hospital, City offices, and Marriott Hotel. Situated between Fogo de Chao and Drury Inn Hotel. Close to I-75.

SUMMARY:

Suite 235: Corner suite w/lots of windows, built-out with private offices, bull pen area, conference room, waiting/reception and more.

FORWARD COMMERCIAL GROUP

6785 TELEGRAPH RD, SUITE 250
BLOOMFIELD HILLS, MI 48301
www.forwardcommercial.com

Emil Cherkasov

Principal Broker
248.662.5066 Office
emil@forwardcommercial.com



OVERVIEW

363 W BIG BEAVER

ACROSS FROM
DMC CHILDREN'S
HOSPITAL

AREA INFORMATION

POPULATION:

261,216 (5 Mile Radius)

MEDIAN HOME VALUE:

\$216,309 (5 Mile Radius)

TRAFFIC COUNTS:

25,524 W Big Beaver Rd WB from Livernois Rd

24,150 W Big Beaver Rd EB from I-75

PROPERTY HIGHLIGHTS

- Great visibility on Big Beaver Rd & NB I-75
- Floor to ceiling windows
- Signage rights
- 286 surface parking spaces
- Reserved parking spaces included

PROPERTY SUMMARY

- 52,636 SF four-story high-end office building
- Renovated 2017 / Built 1978
- 2 Elevators
- Across from DMC Children's Hospital
- Close to Somerset Collection



FORWARD COMMERCIAL GROUP
6785 TELEGRAPH RD, SUITE 250
BLOOMFIELD HILLS, MI 48301
www.forwardcommercial.com

Emil Cherkasov
Principal Broker
248.662.5066 Office
emil@forwardcommercial.com



AERIAL MAP

363 W BIG BEAVER
GREAT VISIBILITY
FROM I-75



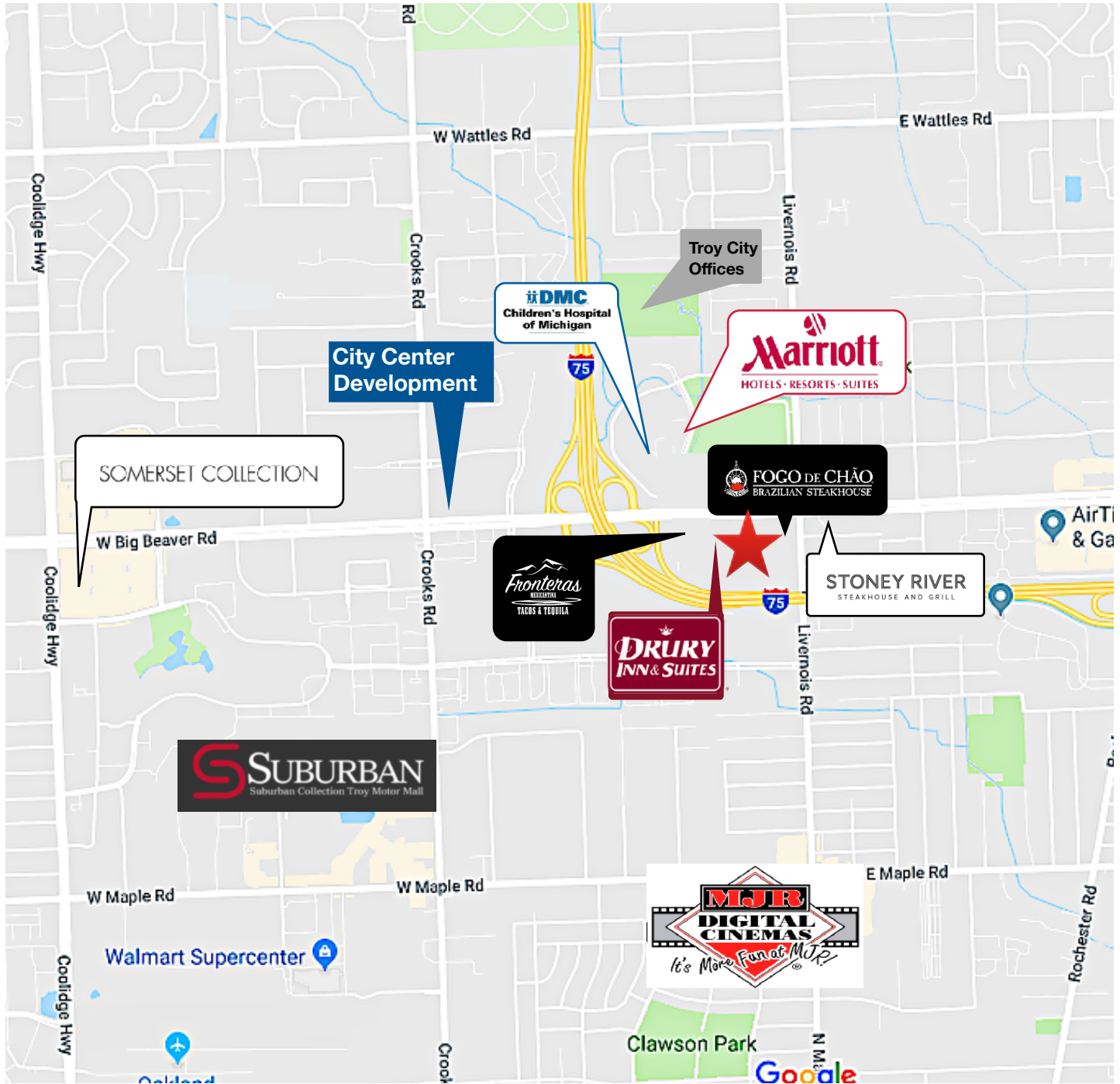
FORWARD COMMERCIAL GROUP
6785 TELEGRAPH RD, SUITE 250
BLOOMFIELD HILLS, MI 48301
www.forwardcommercial.com

Emil Cherkasov
Principal Broker
248.662.5066 Office
emil@forwardcommercial.com



STREET MAP

363 W BIG BEAVER
CENTRAL TROY LOCATION



FORWARD COMMERCIAL GROUP
6785 TELEGRAPH RD, SUITE 250
BLOOMFIELD HILLS, MI 48301
www.forwardcommercial.com

Emil Cherkasov
Principal Broker
248.662.5066 Office
emil@forwardcommercial.com

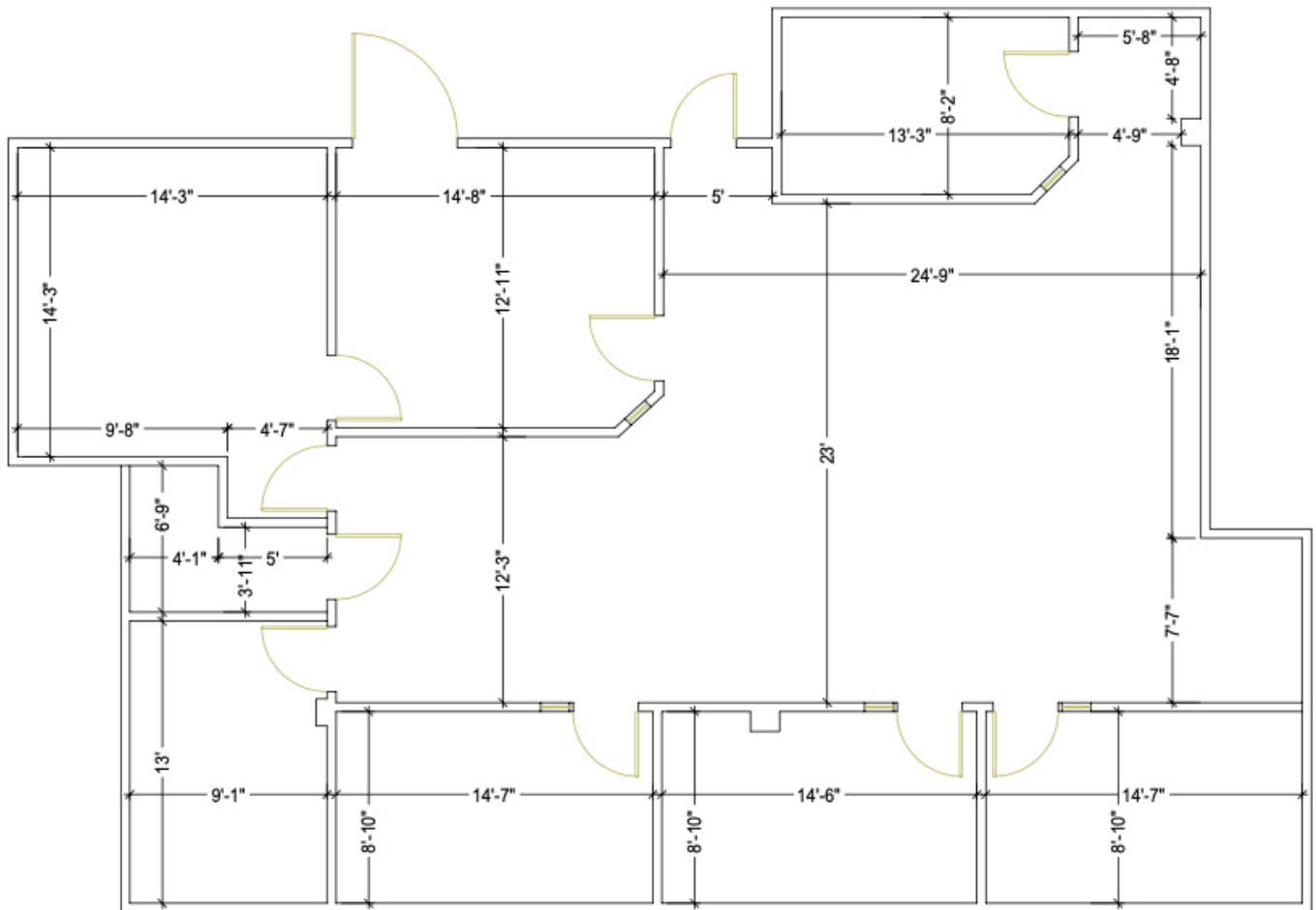


FLOOR PLAN

363 W BIG BEAVER

STE 235: 2,269 SF
FOR LEASE

SUITE 235



FORWARD COMMERCIAL GROUP
6785 TELEGRAPH RD, SUITE 250
BLOOMFIELD HILLS, MI 48301
www.forwardcommercial.com

Emil Cherkasov
Principal Broker
248.662.5066 Office
emil@forwardcommercial.com

