

1176 S MAIN ST

OFFICE SPACE
FOR LEASE

PLYMOUTH, MI



AVAILABLE:

Suite 102: 150 SF

LEASE RATES

Suite 102: \$500.00/Month, Gross

USES:

Office

LOCATION:

Main Street north of Ann Arbor Rd with convenient access to I-275. Easy walking distance from the heart of downtown Plymouth.

SUMMARY:

Individual office space with shared waiting room and restrooms. Great in-town location. Ample parking, signage rights. Close to restaurants, banking, services, and more.

FORWARD COMMERCIAL GROUP

6785 TELEGRAPH RD, SUITE 250
BLOOMFIELD HILLS, MI 48301
www.forwardcommercial.com

Emil Cherkasov

Principal Broker
248.662.5066 Office
emil@forwardcommercial.com



OVERVIEW

1176 S. MAIN
OFFICE SPACE
AVAILABLE

| DEMOGRAPHICS | 1 MILE | 3 MILE | 5 MILE |
|-------------------|-----------|-----------|-----------|
| POPULATION | 11,468 | 73,157 | 189,940 |
| HOUSEHOLDS | 5,062 | 29,681 | 76,436 |
| MEDIAN HOME VALUE | \$289,190 | \$265,593 | \$265,102 |

PROPERTY HIGHLIGHTS

- Convenient access via I-275
- Great in-town location
- Signage rights
- Ample parking

PROPERTY SUMMARY

- Individual office space
- Renovations 2023
- Well-maintained building
- Professionally managed



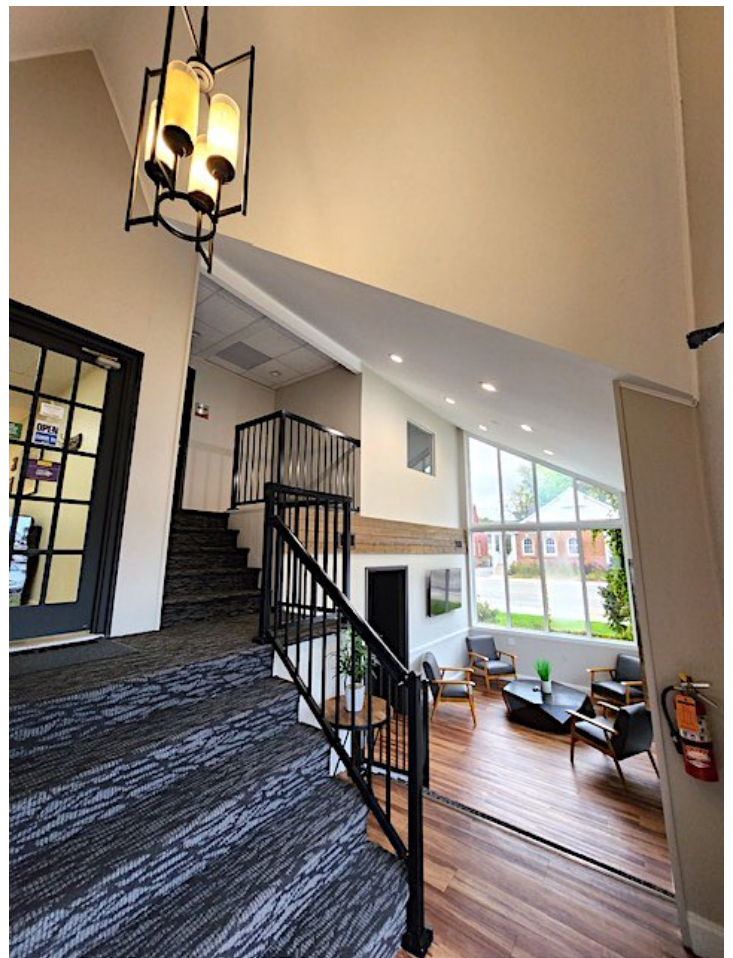
FORWARD COMMERCIAL GROUP
6785 TELEGRAPH RD, SUITE 250
BLOOMFIELD HILLS, MI 48301
www.forwardcommercial.com

Emil Cherkasov
Principal Broker
248.662.5066 Office
emil@forwardcommercial.com



PROPERTY PHOTOS

1176 S. MAIN ST
OFFICE SPACE
FOR LEASE



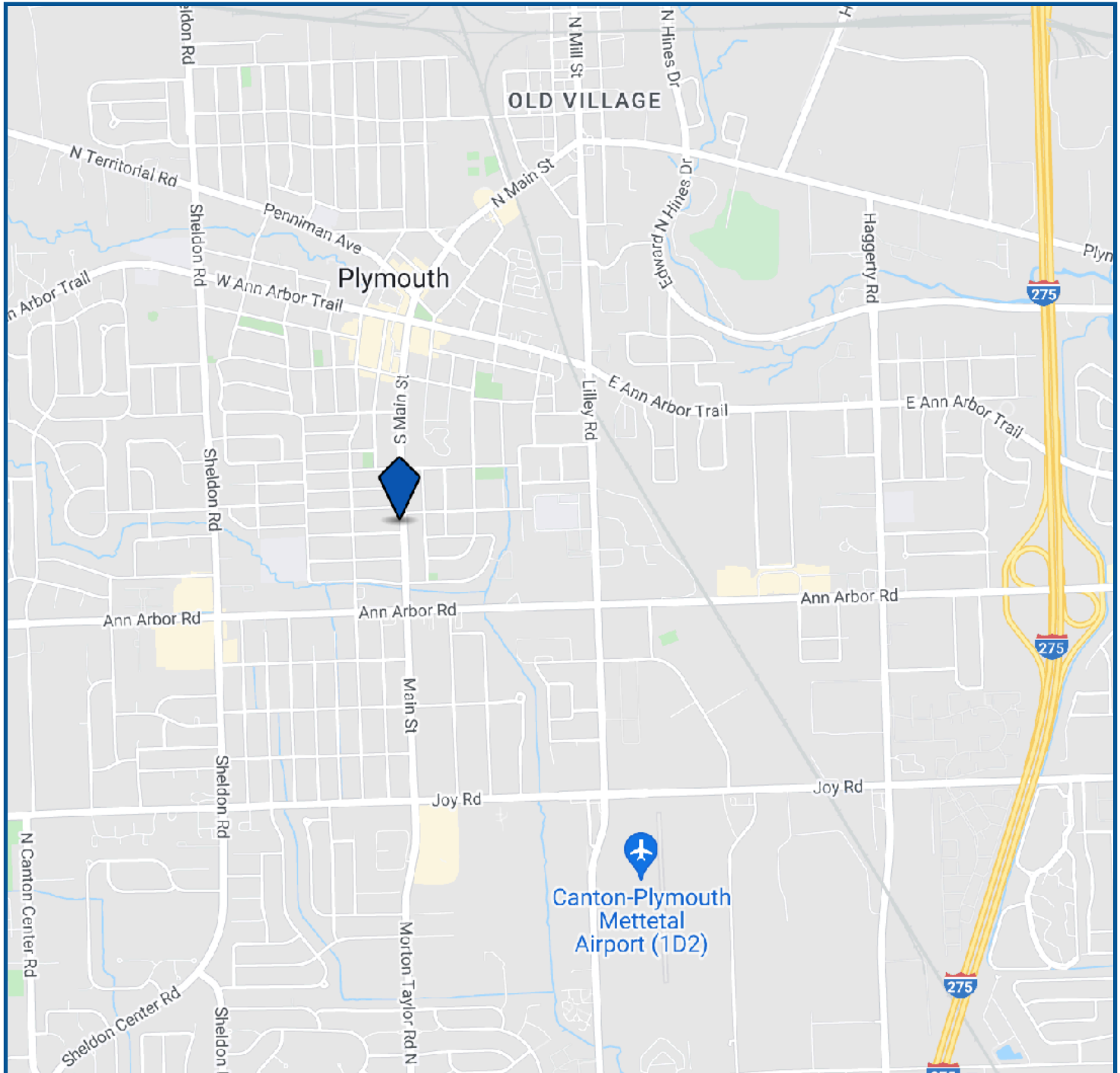
FORWARD COMMERCIAL GROUP
6785 TELEGRAPH RD, SUITE 250
BLOOMFIELD HILLS, MI 48301
www.forwardcommercial.com

Emil Cherkasov
Principal Broker
248.662.5066 Office
emil@forwardcommercial.com



STREET MAP

1176 S. MAIN
EASY ACCESS
VIA I-275



FORWARD COMMERCIAL GROUP
6785 TELEGRAPH RD, SUITE 250
BLOOMFIELD HILLS, MI 48301
www.forwardcommercial.com

Emil Cherkasov
Principal Broker
248.662.5066 Office
emil@forwardcommercial.com

