

43700 WOODWARD AVE

MEDICAL / OFFICE
FOR LEASE

BLOOMFIELD HILLS, MI



AVAILABLE:

Suite 50 - 200 SF
Suite 106 - 2,565 SF
Suite 112: 1,745 SF
Suite 204 - 2,282 SF
Suite 211: 1,344 SF

USES:

Medical/Office

LEASE RATE:

\$19.50/SF/YR, Gross + Electric

NEARBY:

St. Joseph Mercy Hospital, Starbucks, CVS Pharmacy, M1 Concourse, PNC Bank, Genisys Credit Union, Staples, Comerica Bank and more.

LOCATION:

Northbound Woodward Avenue one-half mile north of Square Lake Rd.

SUMMARY:

Completely renovated medical/office building centrally located on the I-75 / M-1 business loop. One-half mile from St. Joseph-Mercy Hospital and close to banking, restaurants, and other services. Great synergy with other medical practices within building. Ample parking. Property is well maintained and managed. More exterior renovations this spring.

FORWARD COMMERCIAL GROUP
6785 TELEGRAPH RD, SUITE 250
BLOOMFIELD HILLS, MI 48301
www.forwardcommercial.com

Emil Cherkasov
Principal Broker
248.662.5066 Office
emil@forwardcommercial.com



OVERVIEW

43700 WOODWARD AVE
MEDICAL / OFFICE SUITE
AVAILABLE

DEMOGRAPHICS	1 MILE	3 MILE	5 MILE
POPULATION	6,868	58,434	175,404
HOUSEHOLDS	2,700	23,518	69,149
MEDIAN HOME VALUE	\$222,482	\$253,167	\$302,737

PROPERTY HIGHLIGHTS

- Great visibility with signage rights
- Completely renovated
- Busy medical center across from St. Joe's Hospital
- Ample parking

PROPERTY SUMMARY

- Suites at various price points
- Year renovated: 2023
- Easy Access via I-75
- Great synergy



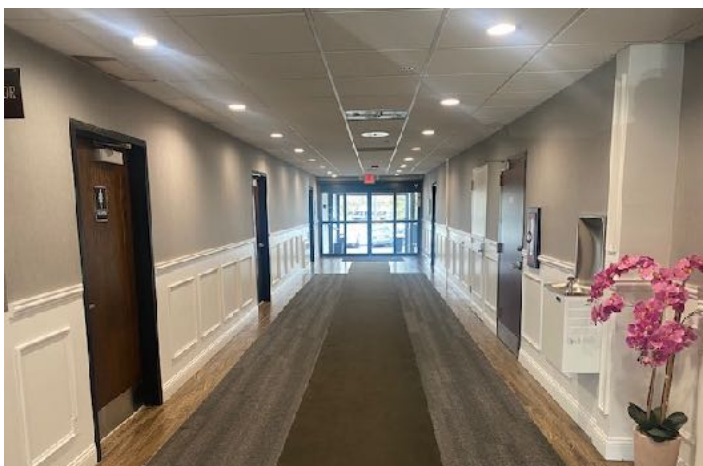
FORWARD COMMERCIAL GROUP
6785 TELEGRAPH RD, SUITE 250
BLOOMFIELD HILLS, MI 48301
www.forwardcommercial.com

Emil Cherkasov
Principal Broker
248.662.5066 Office
emil@forwardcommercial.com



PROPERTY PHOTOS

43700 WOODWARD AVE
GREAT SYNERGY
IN BUILDING



FORWARD COMMERCIAL GROUP
6785 TELEGRAPH RD, SUITE 250
BLOOMFIELD HILLS, MI 48301
www.forwardcommercial.com

Emil Cherkasov
Principal Broker
248.662.5066 Office
emil@forwardcommercial.com



AERIAL MAP

43700 WOODWARD AVE
AMPLE PARKING
MEDICAL / OFFICE



FORWARD COMMERCIAL GROUP
6785 TELEGRAPH RD, SUITE 250
BLOOMFIELD HILLS, MI 48301
www.forwardcommercial.com

Emil Cherkasov
Principal Broker
248.662.5066 Office
emil@forwardcommercial.com



STREET MAP

43700 WOODWARD AVE
NORTHBOUND
I-75 / M-1 BUS. LOOP



**St. Joseph Mercy
Hospital**

43700 Woodward

FORWARD COMMERCIAL GROUP
6785 TELEGRAPH RD, SUITE 250
BLOOMFIELD HILLS, MI 48301
www.forwardcommercial.com

Emil Cherkasov
Principal Broker
248.662.5066 Office
emil@forwardcommercial.com

