

2400 UNION LAKE RD

MEDICAL / DENTAL
FOR LEASE

COMMERCE TWP, MI



AVAILABLE:

Unit 2420: 1,510 SF

USES:

Medical / Dental

LEASE RATE:

\$24.00/SF/YR, Gross + Utilities

NEARBY TENANTS:

Chase Bank, Shell Gas Station, Arby's, Kroger, Burger King, Planet Fitness, Paradise Nails, and more!

LOCATION:

Located on Union Lake Road North of Commerce Road.

SUMMARY:

Under new ownership and management. Highly desirable busy location on Union Lake just North of Commerce Rd. Move-in ready former dental/medical space available. Direct entrance. Ample parking. Signage rights. Adjacent unit to be occupied by a busy counseling group.

FORWARD COMMERCIAL GROUP

240 MARTIN STREET, SUITE 200
BIRMINGHAM, MI 48009
www.forwardcommercial.com

EMIL CHERKASOV

Principal Broker
248.662.5066 Office
emil@forwardcommercial.com



OVERVIEW

2400 UNION LAKE RD
MEDICAL / DENTAL
FOR LEASE

DEMOGRAPHICS	1 MILE	3 MILE	5 MILE
POPULATION	5,173	47,340	135,125
AVG HH INCOME	\$135,471	\$125,447	\$120,206
MEDIAN HOME VALUE	\$356,006	\$328,915	\$315,360
TRAFFIC COUNTS	31,804 CARS DAILY		

PROPERTY HIGHLIGHTS

- Easy access, direct entrance
- Ample parking spaces
- Signage rights
- Busy location

PROPERTY SUMMARY

- 1,510 SF available for lease
- Former dental space
- Move-in ready



FORWARD COMMERCIAL GROUP
240 MARTIN STREET, SUITE 200
BIRMINGHAM, MI 48009
www.forwardcommercial.com

EMIL CHERKASOV
Principal Broker
248.662.5066 Office
emil@forwardcommercial.com



EXTERIOR PHOTOS

2400 UNION LAKE RD

1,510 SF

FOR LEASE



FORWARD COMMERCIAL GROUP

240 MARTIN STREET, SUITE 200
BIRMINGHAM, MI 48009
www.forwardcommercial.com

EMIL CHERKASOV

Principal Broker
248.662.5066 Office
emil@forwardcommercial.com

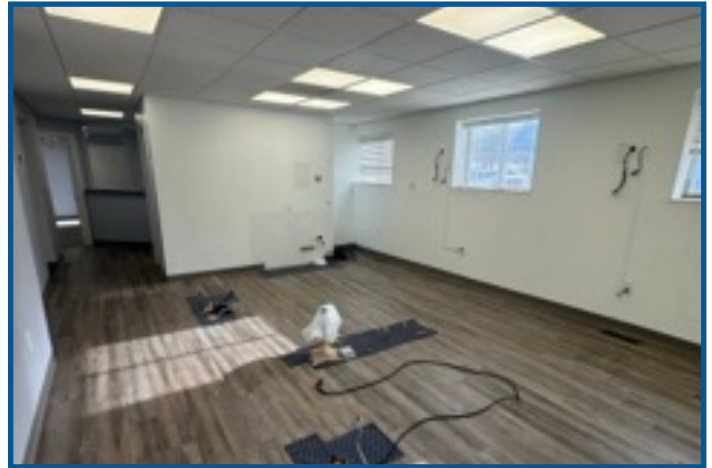


INTERIOR PHOTOS

2400 UNION LAKE RD

1,510 SF

FOR LEASE



FORWARD COMMERCIAL GROUP

240 MARTIN STREET, SUITE 200
BIRMINGHAM, MI 48009
www.forwardcommercial.com

EMIL CHERKASOV

Principal Broker
248.662.5066 Office
emil@forwardcommercial.com

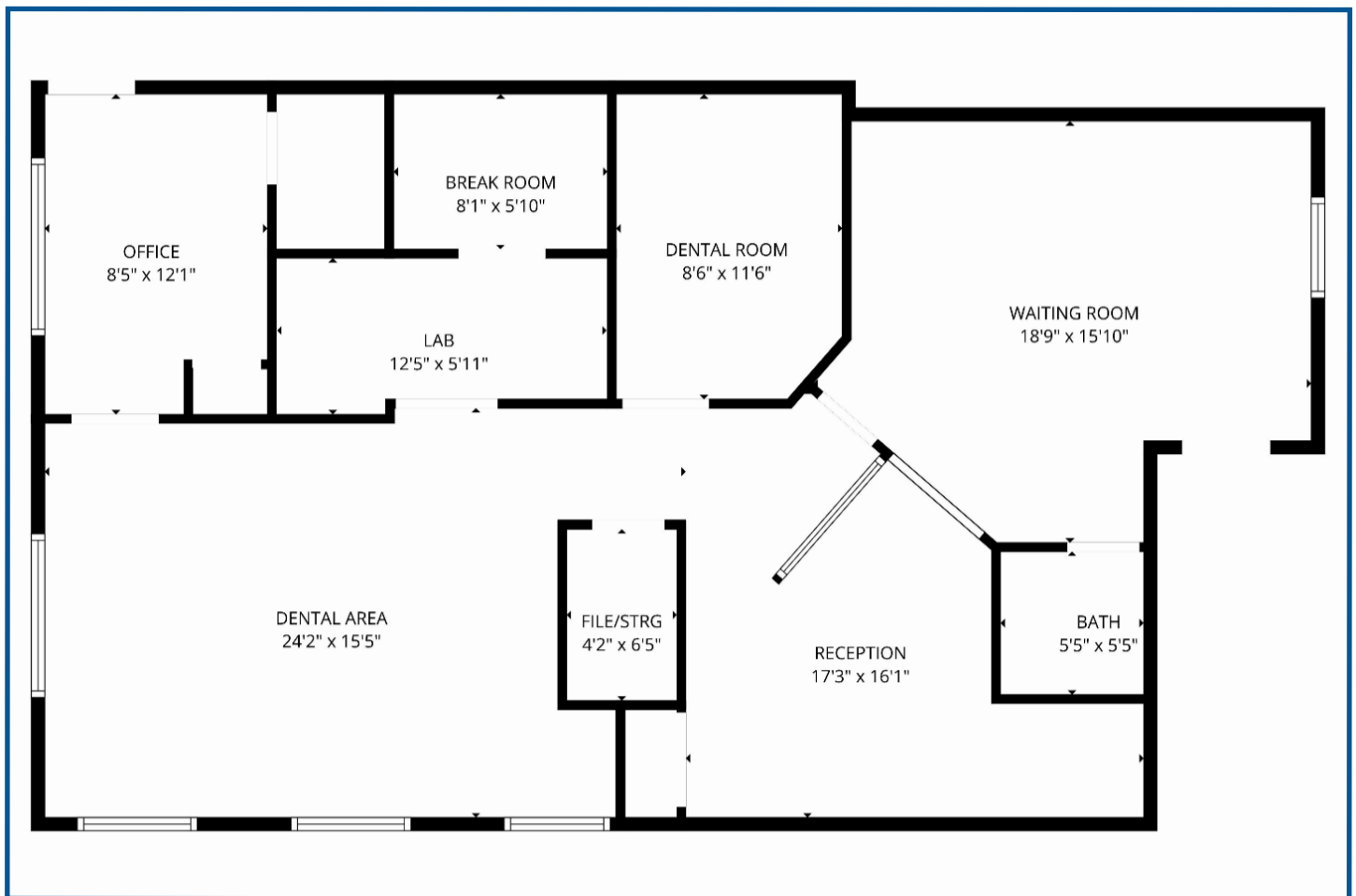


FLOOR PLAN

2400 UNION LAKE RD

1,510 SF

FOR LEASE



FORWARD COMMERCIAL GROUP

240 MARTIN STREET, SUITE 200
BIRMINGHAM, MI 48009
www.forwardcommercial.com

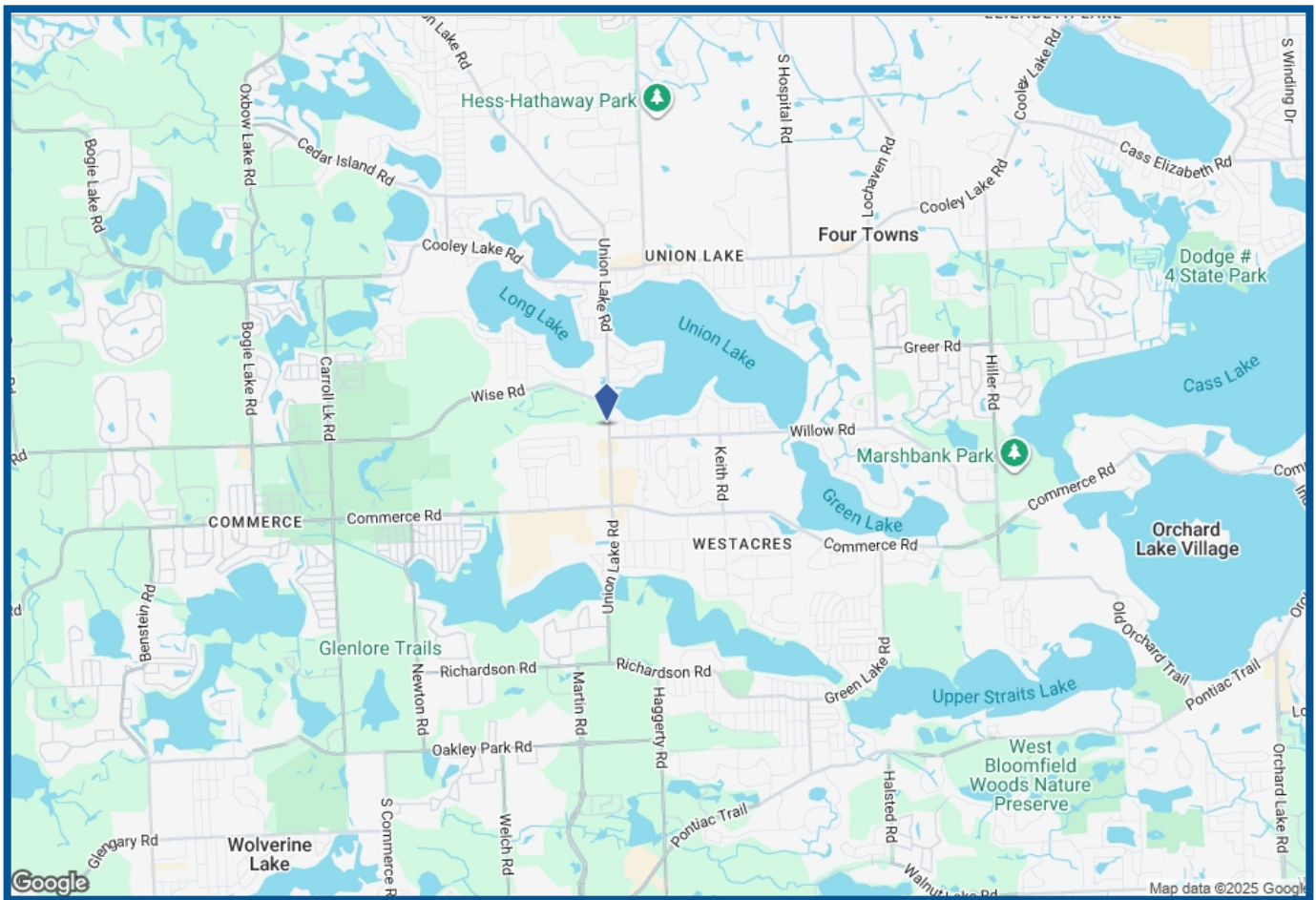
EMIL CHERKASOV

Principal Broker
248.662.5066 Office
emil@forwardcommercial.com



STREET MAP

2400 UNION LAKE RD
MEDICAL / DENTAL
FOR LEASE



FORWARD COMMERCIAL GROUP

240 MARTIN STREET, SUITE 200
BIRMINGHAM, MI 48009
www.forwardcommercial.com

EMIL CHERKASOV

Principal Broker
248.662.5066 Office
emil@forwardcommercial.com

