

FOR LEASE

3,779 SF

RETAIL BUILDING

3001 ROCHESTER RD
ROYAL OAK, MI



AVAILABLE:

3,779 SF

USES:

Retail

LEASE RATE:

\$12.00/SF/YR, NNN

NEARBY:

Dairy Queen, Salvation Army, Hippie's Pizza, Dollar Tree, and more!

LOCATION:

Close to the intersection of 13 Mile Road and Rochester Road

SUMMARY:

Freestanding Retail Building – Hard Corner
Former MJC Archery. Densely populated area.
Zoning: Mixed-Use II

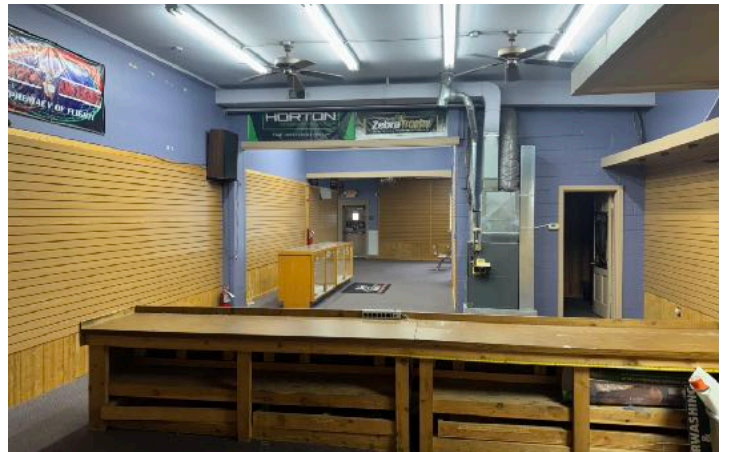
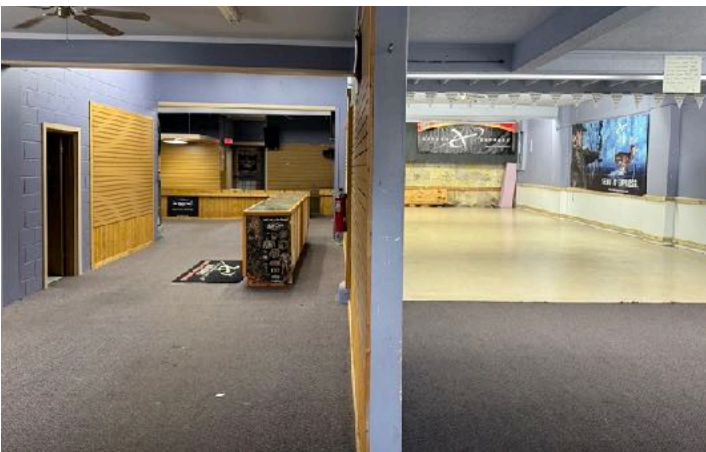
FORWARD COMMERCIAL GROUP
6785 TELEGRAPH RD, SUITE 250
BLOOMFIELD HILLS, MI 48301
www.forwardcommercial.com

Rachelle Cherkasov
Associate
248.662.5066 Office
rachelle@forwardcommercial.com



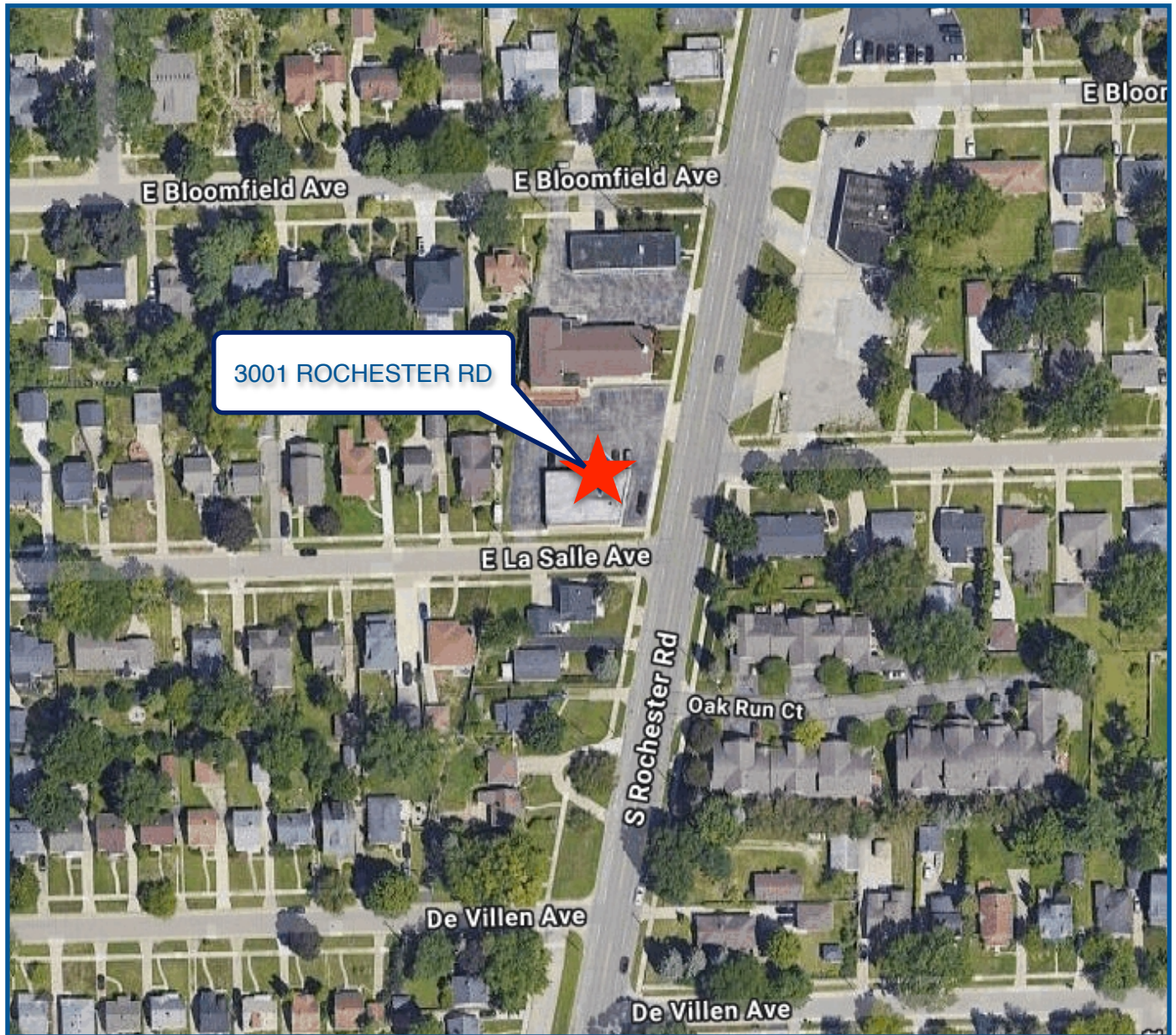
PROPERTY PHOTOS

3001 ROCHESTER RD
FREESTANDING
RETAIL BUILDING



AERIAL MAP

3001 ROCHESTER RD
3,779 SF RETAIL
FOR LEASE



FORWARD COMMERCIAL GROUP
6785 TELEGRAPH RD, SUITE 250
BLOOMFIELD HILLS, MI 48301
www.forwardcommercial.com

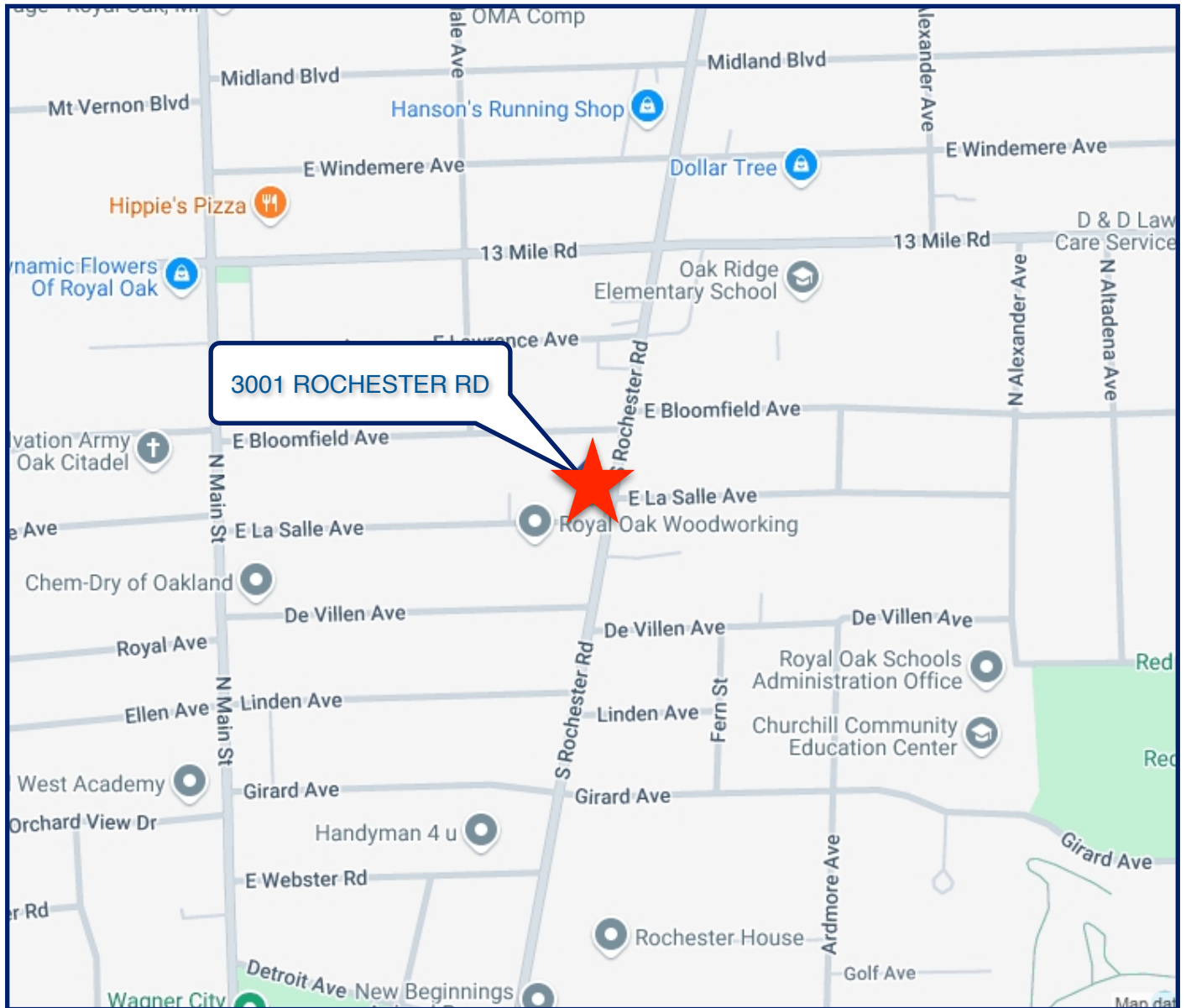
Emil Cherkasov
Principal Broker
248.662.5066 Office
emil@forwardcommercial.com

STREET MAP

3001 ROCHESTER RD

3,779 SF RETAIL

FOR LEASE



Forward
Commercial Group

248.662.5066

www.forwardcommercial.com