

17220

W. 12 Mile Road
Southfield, Michigan



For Sale: \$1,475,000



**Forward
Commercial Group**

CONTENTS

SUMMARY	3
AERIAL MAP	4
PHOTOS	5, 6
DEMOGRAPHICS	7
STREET MAP	8
COMPANY SUMMARY	9



SUMMARY

Forward Commercial Group (FCG) is pleased to offer for sale 17220 W. 12 Mile Rd in Southfield, Michigan. Two-story 14,890 SF office building centrally located just east of Southfield Road and minutes from Birmingham and Royal Oak. Property is 50% occupied providing an ideal owner/user opportunity. Do not disturb or approach tenants.



DETAILS

Price: \$1,475,000 (\$99.06/sf)

Square Feet: 14,890

Stories: Two

Lot Size: 1.02 Acres

Parking: 66 surface parking spaces

Built 1971

Renovated 2010

Use: Office / Medical

Occupancy: 50%

Traffic Counts: 50,875 cars daily at corner of
12 Mile Rd & Southfield

AERIAL MAP



Southfield Rd

W. 12 Mile Rd

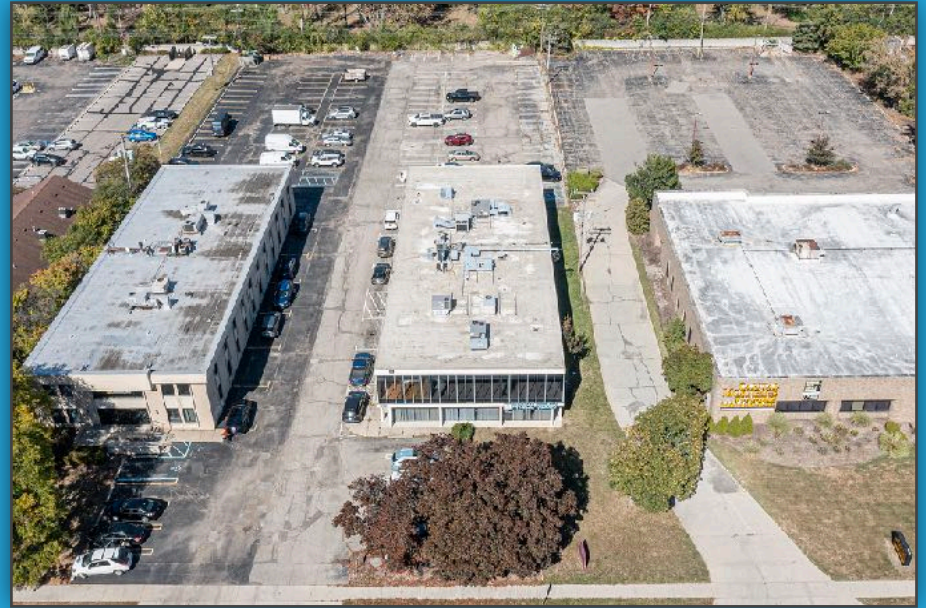
PHOTOS

17220 W. 12 MILE RD



PHOTOS

17220 W. 12 MILE RD

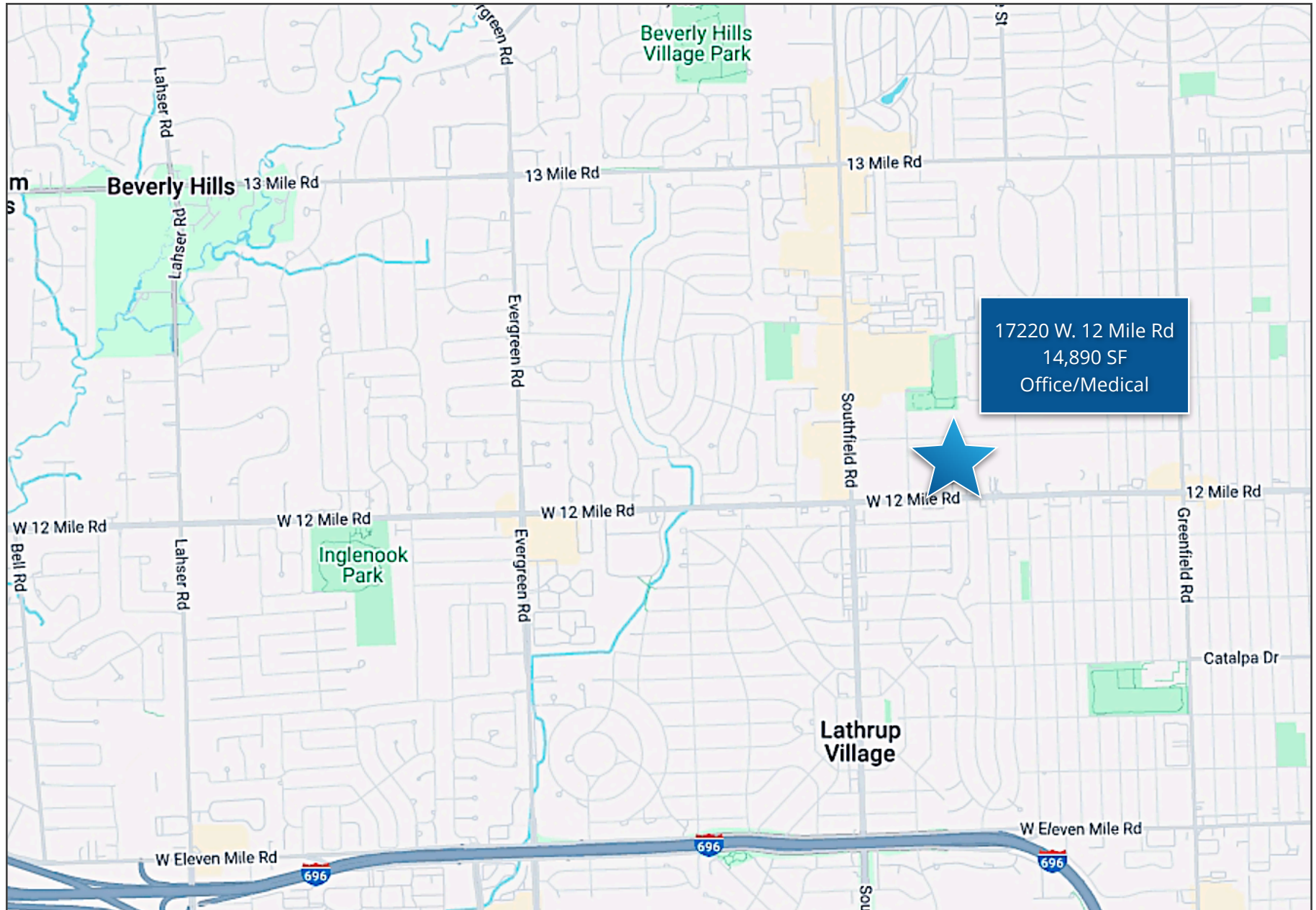


DEMOGRAPHICS

DEMOGRAPHICS	1 MILE	3 MILES	5 MILES
POPULATION	12,962	112,515	289,571
AVERAGE HOUSEHOLD INCOME	\$94,564	\$113,130	\$108,025
MEDIAN HOME VALLUE	\$205,573	\$277,038	\$268,761



STREET MAP



FCG SUMMARY



At Forward Commercial Group (FCG) we drive the success of our clients by fostering long term partnerships built on exceptional service, local area expertise and market knowledge.

We offer comprehensive commercial real estate services, including property and portfolio representation, leasing and sales, investment acquisition opportunities, tenant representation, and support for property development and project execution. Our clients range from local real estate investment companies and business owners, to national capital investment groups and developers.



EMIL CHERKASOV
PRINCIPAL BROKER

emil@forwardcommercial.com
248.662.5066 Office



GEOFF KOTILA
SENIOR ASSOCIATE

geoff@forwardcommercial.com
248.662.5066 Office

FORWARD COMMERCIAL GROUP
240 MARTIN STREET, STE 200
BIRMINGHAM, MI 48009
www.forwardcommercial.com

