

FOR LEASE

2,133 SF
OFFICE / MEDICAL

37500 W. SEVEN MILE RD
LIVONIA, MI



AVAILABLE:

2,133 SF (second floor space)

USES:

Office, Medical Office

LEASE RATE:

\$26.00/SF/YR Gross + Utilities

JOIN TENANTS:

Apple Crest Dental and Ascension Medical Group

LOCATION:

Just west of Newburgh Rd and east of I-275

SUMMARY:

Newly built office/medical space . Move-in ready with high-end finishes. Private restrooms, kitchen, and more. Centrally located in Livonia with easy access via I-275. Ample parking. Great visibility and exposure. Lots of windows providing natural light. Monument signage available.

FORWARD COMMERCIAL GROUP
6785 TELEGRAPH RD, SUITE 250
BLOOMFIELD HILLS, MI 48301
www.forwardcommercial.com

Emil Cherkasov
Principal Broker
248.662.5066 Office
emil@forwardcommercial.com



OVERVIEW

37500 W. SEVEN MILE

2,133 SF

OFFICE / MEDICAL

| DEMOGRAPHICS | 1 MILE | 3 MILE | 5 MILE |
|-------------------|-----------|-----------|-----------|
| POPULATION | 4,599 | 76,734 | 192,845 |
| HOUSEHOLDS | 2,000 | 32,362 | 81,251 |
| MEDIAN HOME VALUE | \$288,133 | \$255,438 | \$244,189 |

PROPERTY HIGHLIGHTS

- Easy access via I-275
- Lots of windows
- Signage rights available
- 43 parking spaces

PROPERTY SUMMARY

- Price: \$26/SF/YR Gross + Utilities
- Year Built: 2010
- Lot Size: 1 Acre
- Building: 10,568 SF



FORWARD COMMERCIAL GROUP
6785 TELEGRAPH RD, SUITE 250
BLOOMFIELD HILLS, MI 48301
www.forwardcommercial.com

Emil Cherkasov
Principal Broker
248.662.5066 Office
emil@forwardcommercial.com

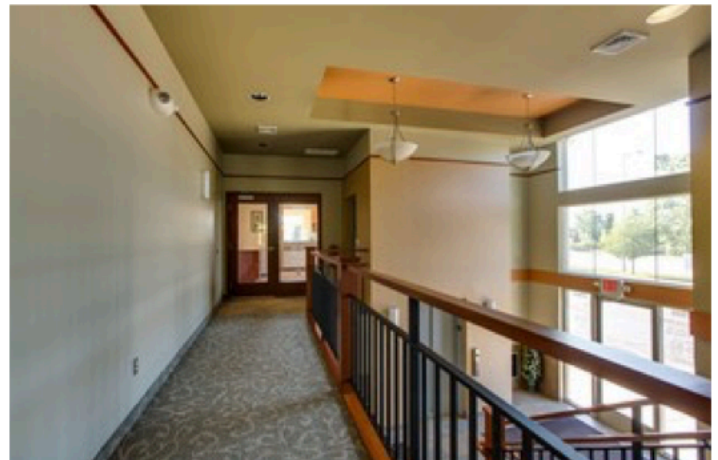
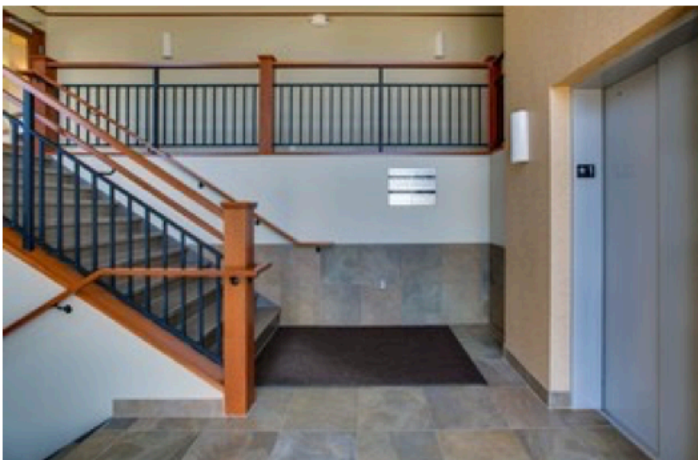
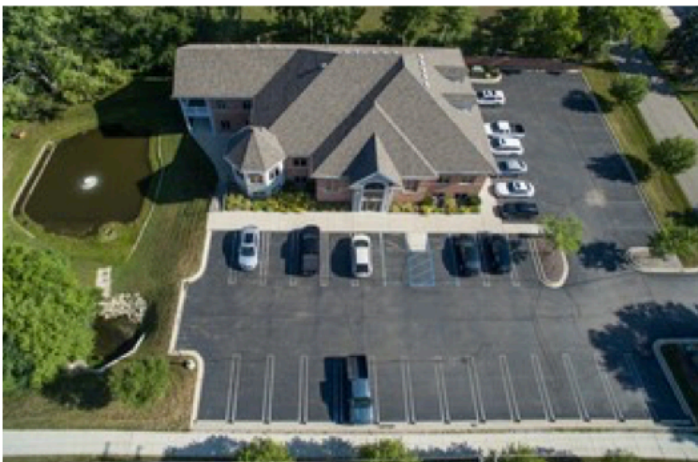


PROPERTY PHOTOS

37500 W. SEVEN MILE

2,133 SF

OFFICE / MEDICAL



FORWARD COMMERCIAL GROUP
6785 TELEGRAPH RD, SUITE 250
BLOOMFIELD HILLS, MI 48301
www.forwardcommercial.com

Emil Cherkasov
Principal Broker
248.662.5066 Office
emil@forwardcommercial.com



AERIAL MAP

37500 W. SEVEN MILE

2,133 SF

OFFICE / MEDICAL



FORWARD COMMERCIAL GROUP

6785 TELEGRAPH RD, SUITE 250
BLOOMFIELD HILLS, MI 48301
www.forwardcommercial.com

Emil Cherkasov

Principal Broker
248.662.5066 Office
emil@forwardcommercial.com

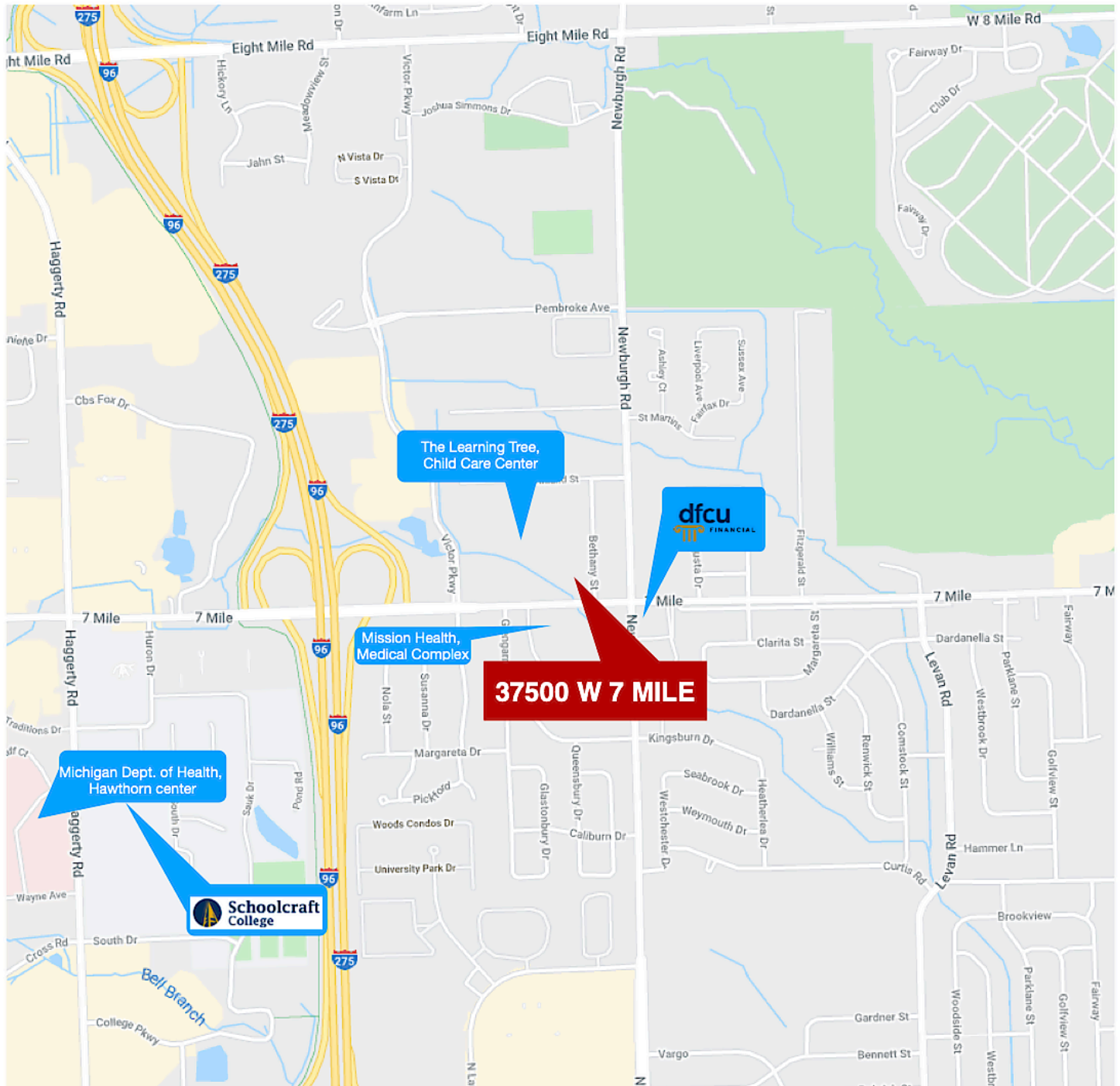


STREET MAP

37500 W. SEVEN MILE

2,133 SF

OFFICE / MEDICAL



FORWARD COMMERCIAL GROUP
6785 TELEGRAPH RD, SUITE 250
BLOOMFIELD HILLS, MI 48301
www.forwardcommercial.com

Emil Cherkasov
Principal Broker
248.662.5066 Office
emil@forwardcommercial.com

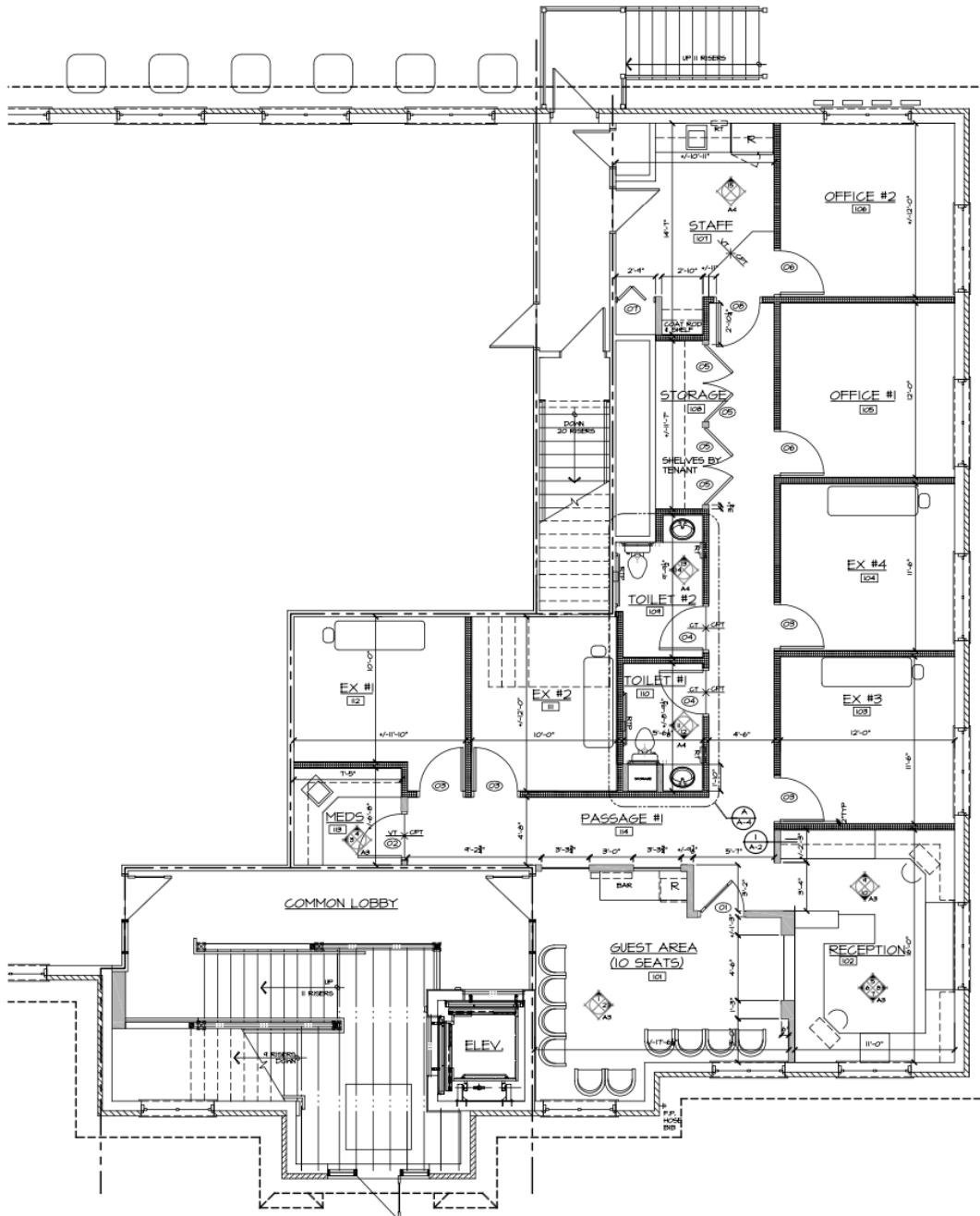


FLOOR PLAN

37500 W. SEVEN MILE

2,133 SF

OFFICE / MEDICAL



FORWARD COMMERCIAL GROUP
6785 TELEGRAPH RD, SUITE 250
BLOOMFIELD HILLS, MI 48301
www.forwardcommercial.com

Emil Cherkasov
Principal Broker
248.662.5066 Office
emil@forwardcommercial.com

