

FOR LEASE

739 SF OFFICE / RETAIL

**149 PIERCE ST
BIRMINGHAM, MI 48009**



AVAILABLE:

Suite 135: 960 SF
Suite 149: 733 SF

USES:

Suite 135 - Retail
Suite 149 - Office/Retail

LEASE RATE:

\$45.00/SF/YR, NNN

LOCATION:

Downtown Birmingham between Maple and Martin Rd,
one block west of Old Woodward Ave.

SUMMARY:

Highly desirable Pierce Street and Maple Road in
downtown Birmingham close to restaurants, shops, and
more. Zoning: B-4

Suite 135 - Retail / restaurant space with bonus lower
level space used as prep kitchen.

Suite 149 - Lower level office / retail space.

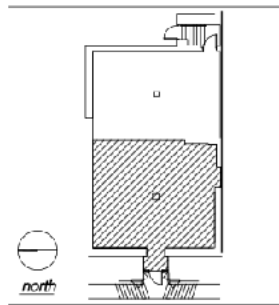
FORWARD COMMERCIAL GROUP
6785 TELEGRAPH RD, SUITE 250
BLOOMFIELD HILLS, MI 48301
www.forwardcommercial.com

Emil Cherkasov
Principal Broker
248.662.5066 Office
emil@forwardcommercial.com



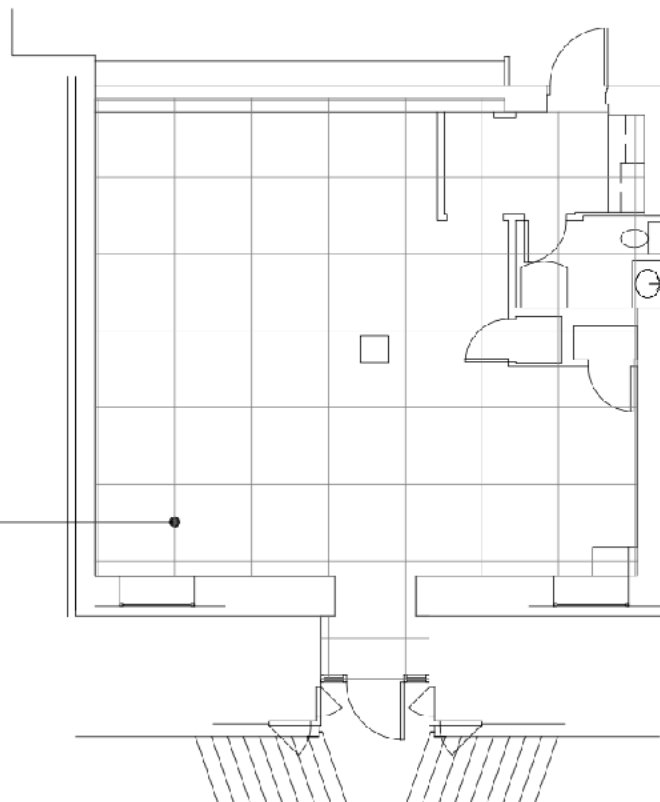
FLOOR PLAN

149 PIERCE ST
BRIMINGHAM, MI
733 SF OFFICE/RETAIL



Suite Location Plan
159 Pierce St.
Birmingham, Michigan

***4' x 4' planning
module***



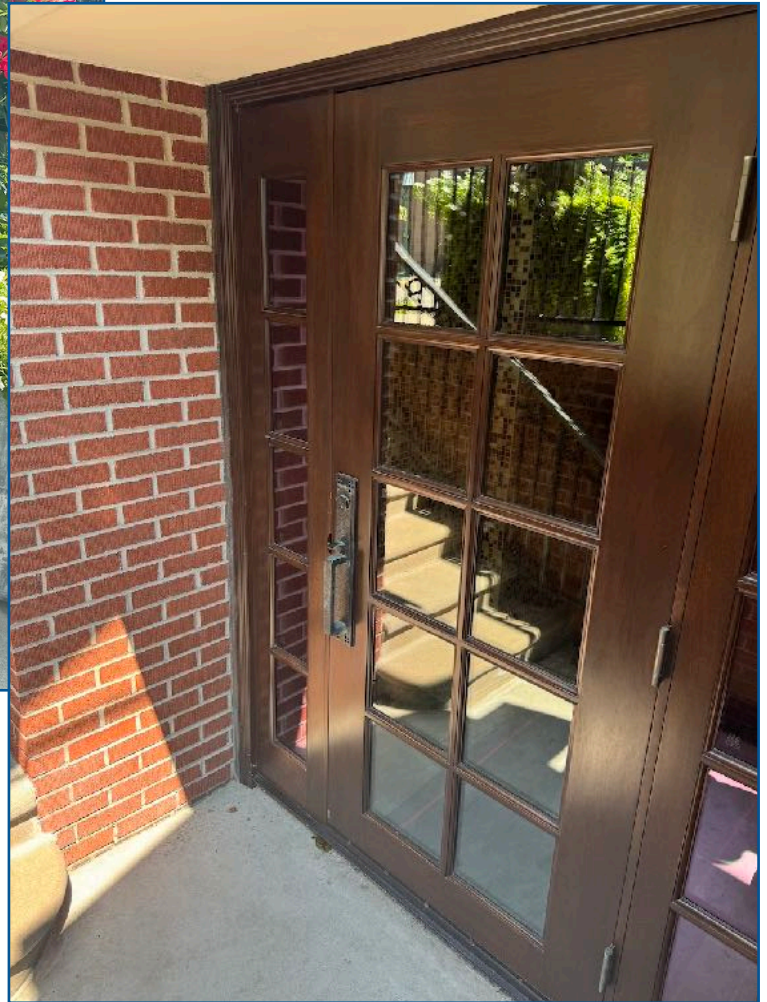
FORWARD COMMERCIAL GROUP
6785 TELEGRAPH RD, SUITE 250
BLOOMFIELD HILLS, MI 48301
www.forwardcommercial.com

Emil Cherkasov
Principal Broker
248.662.5066 Office
emil@forwardcommercial.com



PROPERTY PHOTOS

149 PIERCE ST
BRIMINGHAM, MI
733 SF OFFICE/RETAIL



FORWARD COMMERCIAL GROUP
6785 TELEGRAPH RD, SUITE 250
BLOOMFIELD HILLS, MI 48301
www.forwardcommercial.com

Emil Cherkasov
Principal Broker
248.662.5066 Office
emil@forwardcommercial.com



STREET MAP

135-149 PIERCE ST
GREAT DOWNTOWN
BIRMINGHAM LOCATION



FORWARD COMMERCIAL GROUP
6785 TELEGRAPH RD, SUITE 250
BLOOMFIELD HILLS, MI 48301
www.forwardcommercial.com

Emil Cherkasov
Principal Broker
248.662.5066 Office
emil@forwardcommercial.com

