

FOR LEASE



1,250 SF & 2,500 SF
RETAIL / MEDICAL / OFFICE

40000 HAYES ROAD
CLINTON TWP, MI



AVAILABLE:

40060: 1,250 SF

40080: 2,500 SF

40100: 1,250 SF

USE:

Retail / Medical / Office

LEASE RATE:

\$12.00/ SF/ YR, Gross + Utilities

LOCATION:

On Hayes Road, centrally located between 17 & 18 Mile Roads.

SUMMARY:

Newly renovated retail center with new parking lot. High daytime traffic. Ample parking. Signage rights.

JOIN TENANTS:

Subway, B&D Nails, Great Lakes Animal Hospital, Golden Gate Restaurant, and more.

FORWARD COMMERCIAL GROUP

240 MARTIN STREET, SUITE 200
BIRMINGHAM, MI 48009
www.forwardcommercial.com

Emil Cherkasov

Principal Broker
248.662.5066 Office
emil@forwardcommercial.com

Geoff Kotila

Senior Associate
248.662.5066 Office
geoff@forwardcommercial.com

OVERVIEW

40000 HAYES RD.
1,250 SF & 2,500 SF
RETAIL / MEDICAL / OFFICE

DEMOGRAPHICS	1 MILE	3 MILE	5 MILE
POPULATION	15,366	107,847	287,041
HOUSEHOLDS	6,234	45,773	116,679
MEDIAN HOME VALUE	\$218,618	\$183,815	\$182,003

PROPERTY HIGHLIGHTS

- Great visibility
- Located near Lakeside Mall and many other retailers
- Signage rights available
- Ample parking

PROPERTY SUMMARY

- Price: \$12.00 /SF /YR, Gross + Utilities
- Year Renovated: 2018
- Lot Size: 4 Acres
- Center Size: 21,200 SF



FORWARD COMMERCIAL GROUP

240 MARTIN STREET, SUITE 200
BIRMINGHAM, MI 48009
www.forwardcommercial.com

Emil Cherkasov

Principal Broker
248.662.5066 Office
emil@forwardcommercial.com

Geoff Kotila

Senior Associate
248.662.5066 Office
geoff@forwardcommercial.com

PROPERTY PHOTOS

40000 HAYES RD.
1,250 SF & 2,500 SF
RETAIL / MEDICAL / OFFICE



FORWARD COMMERCIAL GROUP

240 MARTIN STREET, SUITE 200
BIRMINGHAM, MI 48009
www.forwardcommercial.com

Emil Cherkasov

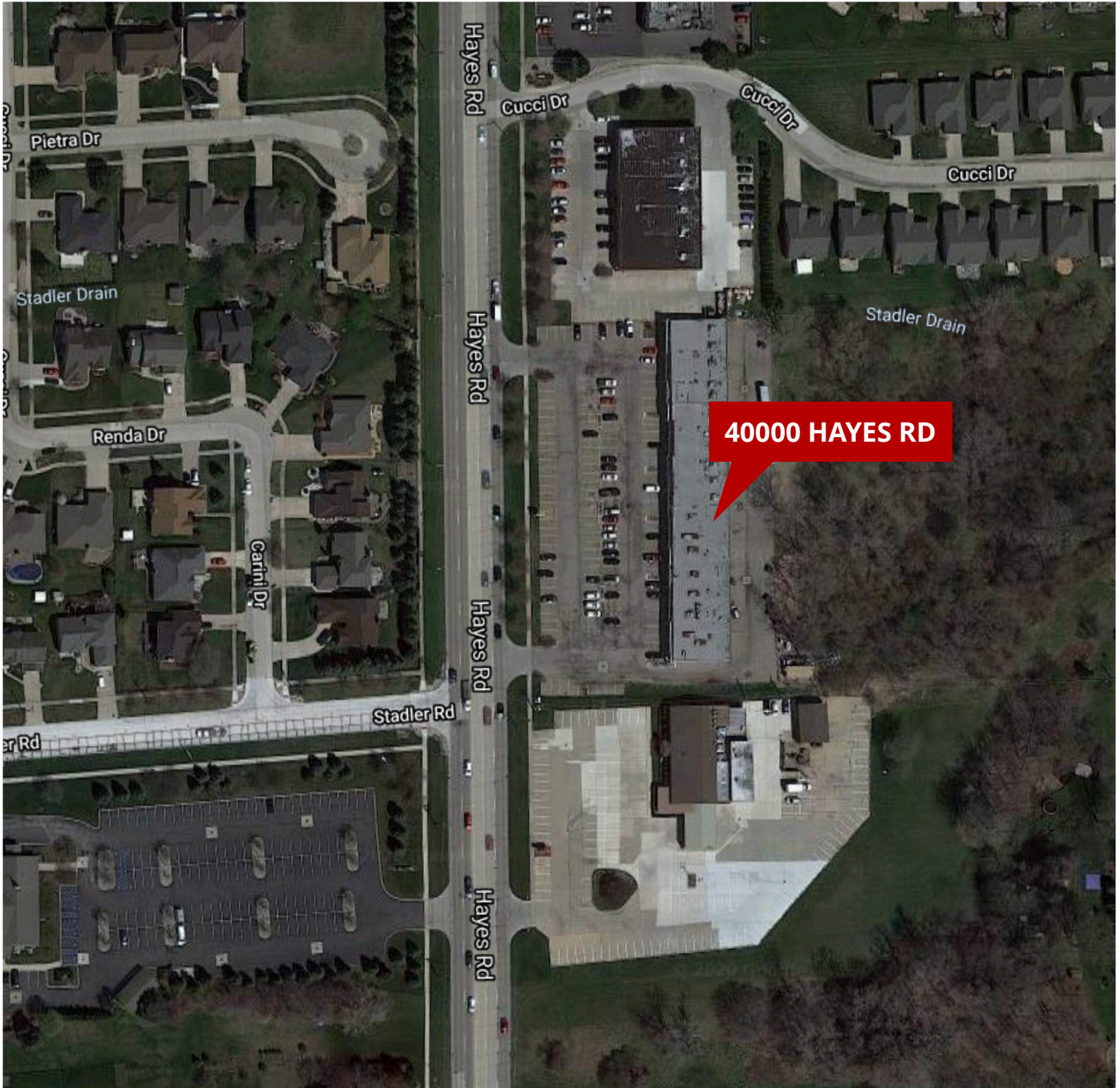
Principal Broker
248.662.5066 Office
emil@forwardcommercial.com

Geoff Kotila

Senior Associate
248.662.5066 Office
geoff@forwardcommercial.com

AERIAL MAP

40000 HAYES RD.
DENSE POPULATION
HIGH DAYTIME TRAFFIC



FORWARD COMMERCIAL GROUP

240 MARTIN STREET, SUITE 200
BIRMINGHAM, MI 48009
www.forwardcommercial.com

Emil Cherkasov

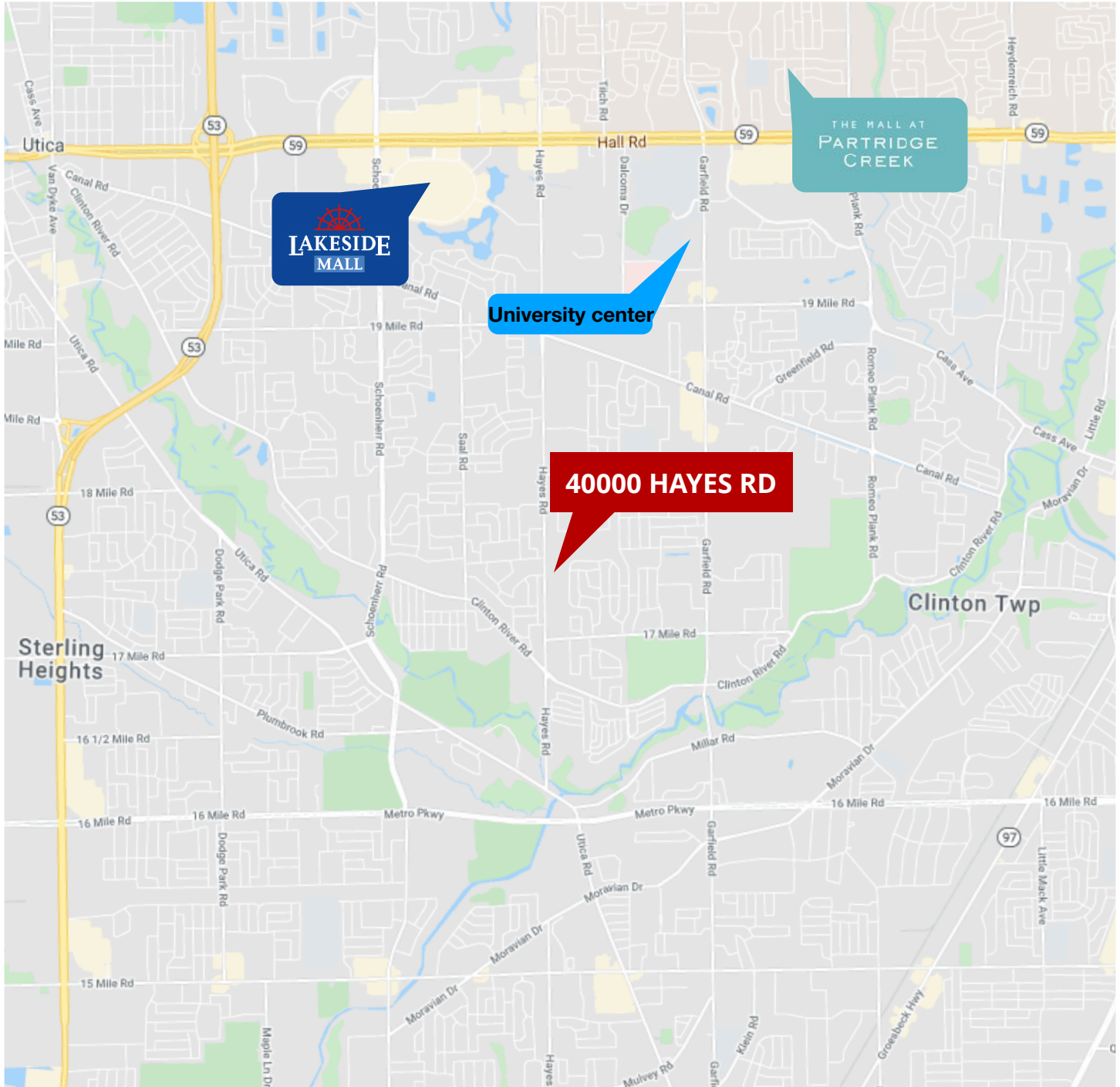
Principal Broker
248.662.5066 Office
emil@forwardcommercial.com

Geoff Kotila

Senior Associate
248.662.5066 Office
geoff@forwardcommercial.com

STREET MAP

40000 HAYES RD.
CENTRAL LOCATION
BETWEEN 17 & 18 MILE



FORWARD COMMERCIAL GROUP

240 MARTIN STREET, SUITE 200
BIRMINGHAM, MI 48009
www.forwardcommercial.com

Emil Cherkasov

Principal Broker
248.662.5066 Office
emil@forwardcommercial.com

Geoff Kotila

Senior Associate
248.662.5066 Office
geoff@forwardcommercial.com