

FOR LEASE

1,207 SF
RETAIL SPACE

30357 WOODWARD AVE

ROYAL OAK, MI



AVAILABLE:

Suite 30357: 1,207 SF

USES:

Retail

LEASE RATE:

\$29.00/SF/YR, Gross + Utilities

NEARBY:

Orangetheory Fitness, Olga's Kitchen, Tennis & Golf Co, Lady Jane's Haircuts, 2941 Mediterranean Street Food, Medical Weight Loss Clinic, AT&T, banks, and more.

LOCATION:

Excellent high traffic location on Woodward Ave just south of 13 Mile Rd. Close to Beaumont Hospital. Easy freeway access via I-696.

SUMMARY:

Building updates/renovations coming soon. Front and rear access. . Additional parking in rear. Great exposure on Woodward Avenue. Join retail tenants Ella Rae Salon, PetWell Urgent Care, Catherine's Pet Parlor and others.

FORWARD COMMERCIAL GROUP

6785 TELEGRAPH RD, SUITE 250
BLOOMFIELD HILLS, MI 48301
www.forwardcommercial.com

Emil Cherkasov

Principal Broker
248.662.5066 Office
emil@forwardcommercial.com



OVERVIEW

30357 WOODWARD
RETAIL
SPACE AVAILABLE

DEMOGRAPHICS	1 MILE	3 MILE	5 MILE
POPULATION	15,072	132,866	299,441
HOUSEHOLDS	7,180	60,390	130,635
MEDIAN HOME VALUE	\$235,766	\$250,630	\$229,844

TRAFFIC COUNTS	63,842 CARS DAILY
-----------------------	--------------------------



FORWARD COMMERCIAL GROUP
6785 TELEGRAPH RD, SUITE 250
BLOOMFIELD HILLS, MI 48301
www.forwardcommercial.com

Emil Cherkasov
Principal Broker
248.662.5066 Office
emil@forwardcommercial.com

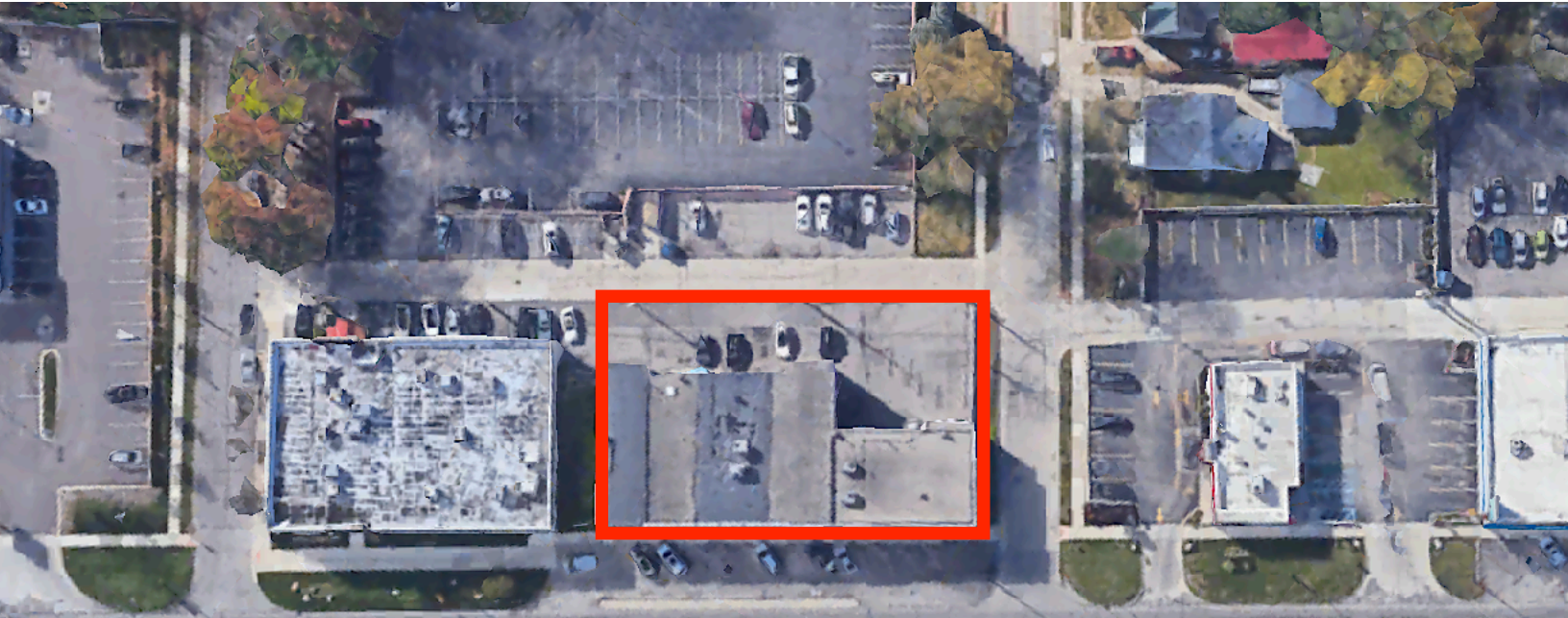


AERIAL VIEW

303457 WOODWARD

1,207 SF

AVAILABLE



← WOODWARD AVENUE - SOUTHBOUND

WOODWARD AVENUE - NORTHBOUND →



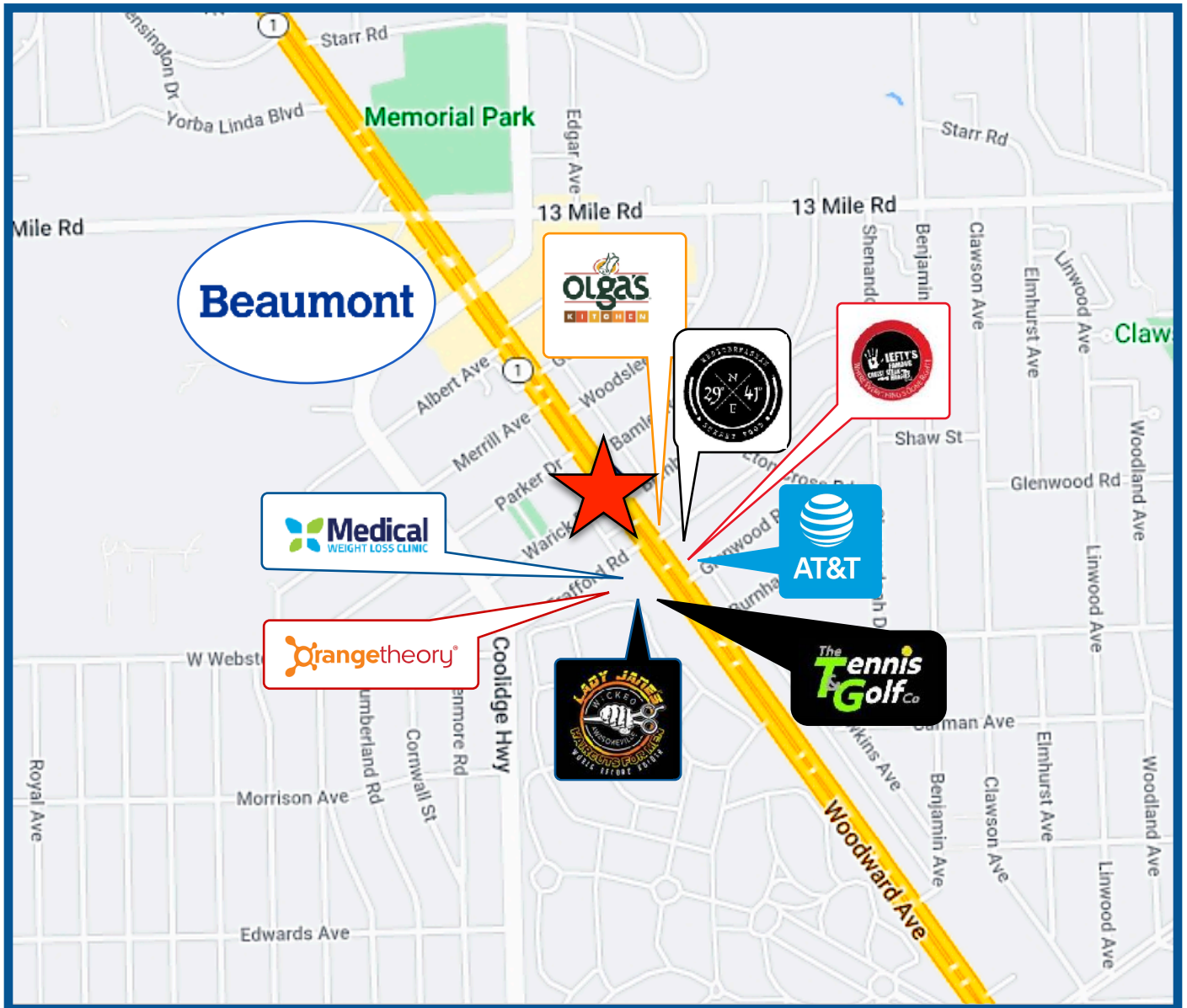
FORWARD COMMERCIAL GROUP
6785 TELEGRAPH RD, SUITE 250
BLOOMFIELD HILLS, MI 48301
www.forwardcommercial.com

Emil Cherkasov
Principal Broker
248.662.5066 Office
emil@forwardcommercial.com



STREET MAP

30357 WOODWARD
NEAR BEAUMONT
AND OTHERS



FORWARD COMMERCIAL GROUP
6785 TELEGRAPH RD, SUITE 250
BLOOMFIELD HILLS, MI 48301
www.forwardcommercial.com

Emil Cherkasov
Principal Broker
248.662.5066 Office
emil@forwardcommercial.com

