

FOR LEASE

MEDICAL/OFFICE SPACE  
AVAILABLE

33200 DEQUINDRE RD  
STERLING HEIGHTS, MI



**AVAILABLE:**

Suite 101 - 4,500 SF

**USES:**

Medical / Office

**LEASE RATE:**

\$12.00/SF/YR, Gross + Utilities

**JOIN TENANTS:**

Elite Family Medicine/Urgent Care and psychology group.

**LOCATION:**

On Dequindre Road just north of 14 Mile Road.  
Just 1.5 miles east of I-75

**SUMMARY:**

Busy medical/office center newly renovated. General office space available – nicely upgraded. Plenty of parking. Signage rights. Direct entrance and private rear entrance.

**FORWARD COMMERCIAL GROUP**

240 MARTIN STREET, STE 200  
BIRMINGHAM, MI 48009  
[www.forwardcommercial.com](http://www.forwardcommercial.com)

**EMIL CHERKASOV**

PRINCIPAL BROKER  
248.662.5066 OFFICE  
[emil@forwardcommercial.com](mailto:emil@forwardcommercial.com)



# OVERVIEW

33200 DEQUINDRE RD  
4,500 SF  
MEDICAL / OFFICE SPACE

DEMOGRAPHICS	1 MILE	3 MILE	5 MILE
POPULATION	9,700	99,839	290,159
HOUSEHOLDS	3,670	39,361	120,049
MEDIAN HOME VALUE	\$158,500	\$171,179	\$176,763

## PROPERTY HIGHLIGHTS

- Easy access via I-75
- Signage rights available
- Direct entrance with parking in front of suite
- 123 parking spaces

## PROPERTY SUMMARY

- Price: \$12.00/SF/YR, Gross+ Utilities
- Renovated: 2018
- Lot Size: 1.0 Acres
- Building: 14,300 SF



### FORWARD COMMERCIAL GROUP

240 MARTIN STREET, STE 200  
BIRMINGHAM, MI 48009  
[www.forwardcommercial.com](http://www.forwardcommercial.com)

### EMIL CHERKASOV

PRINCIPAL BROKER  
248.662.5066 OFFICE  
[emil@forwardcommercial.com](mailto:emil@forwardcommercial.com)

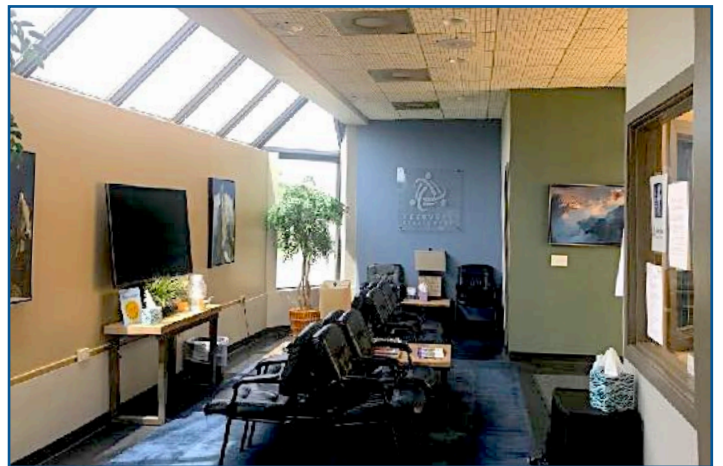


# PROPERTY PHOTOS

33200 DEQUINDRE RD

4,500 SF

MEDICAL / OFFICE SPACE



## FORWARD COMMERCIAL GROUP

240 MARTIN STREET, STE 200  
BIRMINGHAM, MI 48009  
[www.forwardcommercial.com](http://www.forwardcommercial.com)

## EMIL CHERKASOV

PRINCIPAL BROKER  
248.662.5066 OFFICE  
[emil@forwardcommercial.com](mailto:emil@forwardcommercial.com)



# AERIAL VIEW

33200 DEQUINDRE RD

4,500 SF

MEDICAL / OFFICE SPACE



## FORWARD COMMERCIAL GROUP

240 MARTIN STREET, STE 200  
BIRMINGHAM, MI 48009  
[www.forwardcommercial.com](http://www.forwardcommercial.com)

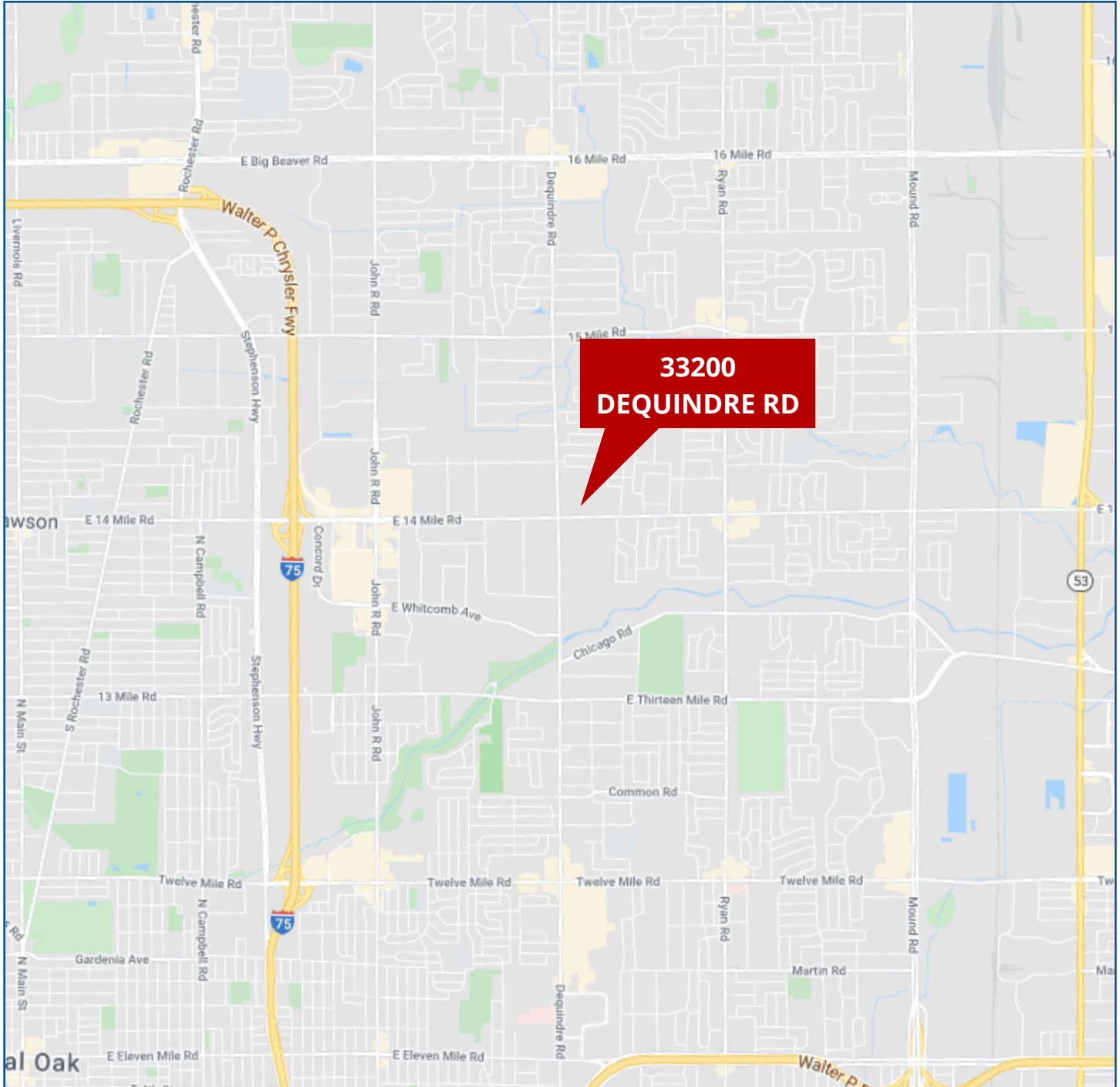
## EMIL CHERKASOV

PRINCIPAL BROKER  
248.662.5066 OFFICE  
[emil@forwardcommercial.com](mailto:emil@forwardcommercial.com)



# STREET MAP

33200 DEQUINDRE RD  
4,500 SF  
MEDICAL / OFFICE SPACE



## FORWARD COMMERCIAL GROUP

240 MARTIN STREET, STE 200  
BIRMINGHAM, MI 48009  
[www.forwardcommercial.com](http://www.forwardcommercial.com)

## EMIL CHERKASOV

PRINCIPAL BROKER  
248.662.5066 OFFICE  
[emil@forwardcommercial.com](mailto:emil@forwardcommercial.com)

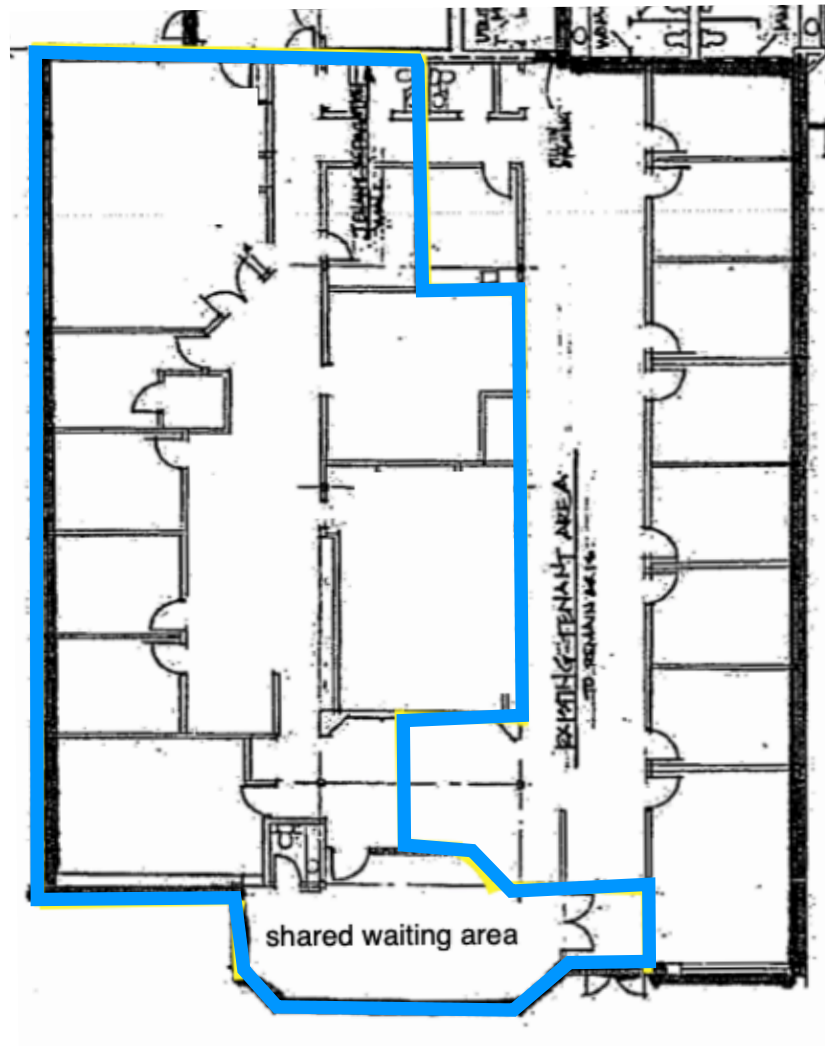


# FLOOR PLAN

33200 DEQUINDRE RD

SUITE 101:

4,500 SF



## FORWARD COMMERCIAL GROUP

240 MARTIN STREET, STE 200  
BIRMINGHAM, MI 48009  
[www.forwardcommercial.com](http://www.forwardcommercial.com)

## EMIL CHERKASOV

PRINCIPAL BROKER  
248.662.5066 OFFICE  
[emil@forwardcommercial.com](mailto:emil@forwardcommercial.com)

