

2400 UNION LAKE RD

MEDICAL / DENTAL  
FOR LEASE

COMMERCE TWP, MI



**AVAILABLE:**

Unit 2420: 1,510 SF

**USES:**

Medical / Dental

**LEASE RATE:**

\$22.00/SF/YR, Gross + Utilities

**NEARBY TENANTS:**

Chase Bank, Shell Gas Station, Arby's, Kroger, Burger King, Planet Fitness, Paradise Nails, and more!

**LOCATION:**

Located on Union Lake Road North of Commerce Road.

**SUMMARY:**

Under new ownership and management. Highly desirable busy location on Union Lake just North of Commerce Rd. Move-in ready former dental/medical space available. Direct entrance. Ample parking. Signage rights. Adjacent unit to be occupied by a busy counseling group.

**FORWARD COMMERCIAL GROUP**

240 MARTIN STREET, SUITE 200  
BIRMINGHAM, MI 48009  
[www.forwardcommercial.com](http://www.forwardcommercial.com)

**EMIL CHERKASOV**

Principal Broker  
248.662.5066 Office  
[emil@forwardcommercial.com](mailto:emil@forwardcommercial.com)



# OVERVIEW

2400 UNION LAKE RD  
MEDICAL / DENTAL  
FOR LEASE

DEMOGRAPHICS	1 MILE	3 MILE	5 MILE
POPULATION	5,173	47,340	135,125
AVG HH INCOME	\$135,471	\$125,447	\$120,206
MEDIAN HOME VALUE	\$356,006	\$328,915	\$315,360
TRAFFIC COUNTS	31,804 CARS DAILY		

## PROPERTY HIGHLIGHTS

- Easy access, direct entrance
- Ample parking spaces
- Signage rights
- Busy location

## PROPERTY SUMMARY

- 1,510 SF available for lease
- Former dental space
- Move-in ready



### FORWARD COMMERCIAL GROUP

240 MARTIN STREET, SUITE 200  
BIRMINGHAM, MI 48009  
[www.forwardcommercial.com](http://www.forwardcommercial.com)

### EMIL CHERKASOV

Principal Broker  
248.662.5066 Office  
[emil@forwardcommercial.com](mailto:emil@forwardcommercial.com)



# EXTERIOR PHOTOS

2400 UNION LAKE RD

1,510 SF

FOR LEASE



## FORWARD COMMERCIAL GROUP

240 MARTIN STREET, SUITE 200  
BIRMINGHAM, MI 48009  
[www.forwardcommercial.com](http://www.forwardcommercial.com)

## EMIL CHERKASOV

Principal Broker  
248.662.5066 Office  
[emil@forwardcommercial.com](mailto:emil@forwardcommercial.com)

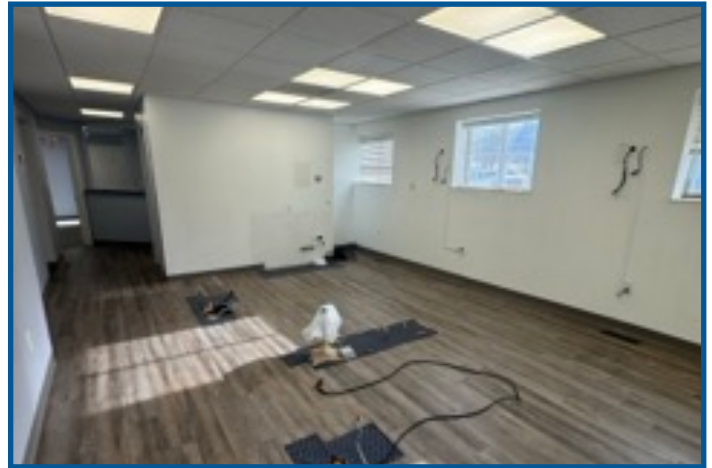


# INTERIOR PHOTOS

2400 UNION LAKE RD

1,510 SF

FOR LEASE



## FORWARD COMMERCIAL GROUP

240 MARTIN STREET, SUITE 200  
BIRMINGHAM, MI 48009  
[www.forwardcommercial.com](http://www.forwardcommercial.com)

## EMIL CHERKASOV

Principal Broker  
248.662.5066 Office  
[emil@forwardcommercial.com](mailto:emil@forwardcommercial.com)

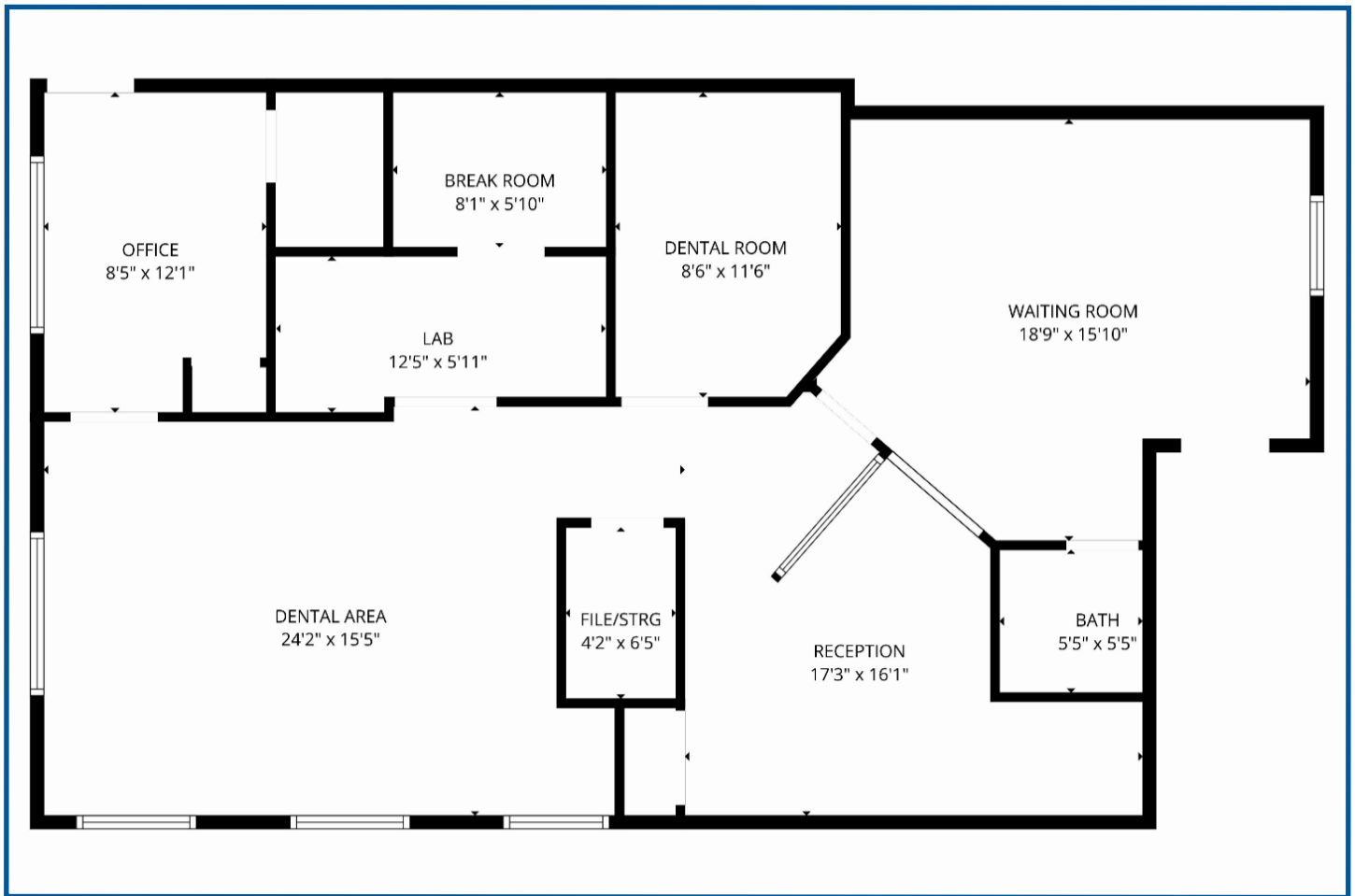


# FLOOR PLAN

2400 UNION LAKE RD

1,510 SF

FOR LEASE



## FORWARD COMMERCIAL GROUP

240 MARTIN STREET, SUITE 200  
BIRMINGHAM, MI 48009  
[www.forwardcommercial.com](http://www.forwardcommercial.com)

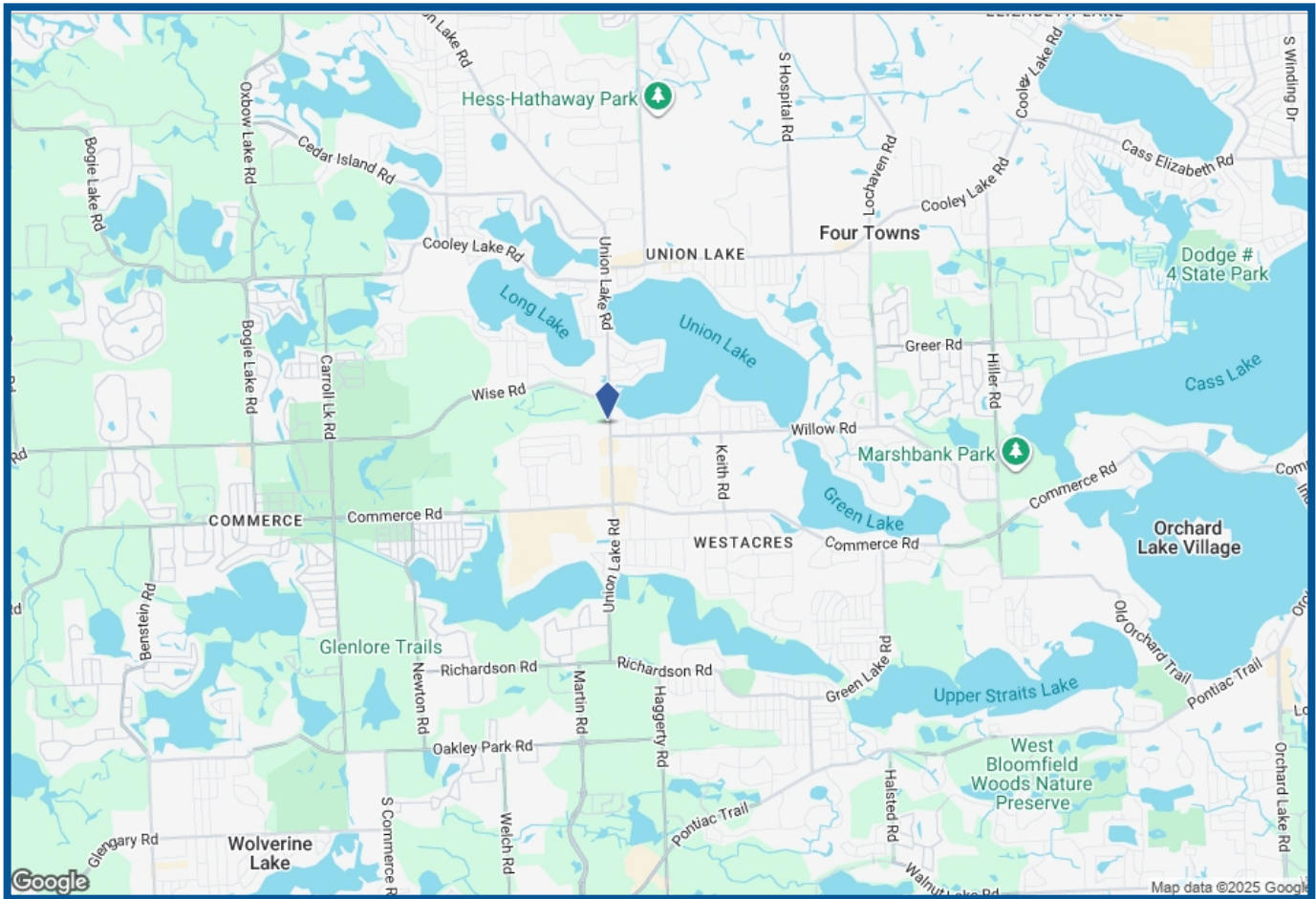
## EMIL CHERKASOV

Principal Broker  
248.662.5066 Office  
[emil@forwardcommercial.com](mailto:emil@forwardcommercial.com)



# STREET MAP

2400 UNION LAKE RD  
MEDICAL / DENTAL  
FOR LEASE



**FORWARD COMMERCIAL GROUP**  
240 MARTIN STREET, SUITE 200  
BIRMINGHAM, MI 48009  
[www.forwardcommercial.com](http://www.forwardcommercial.com)

**EMIL CHERKASOV**  
Principal Broker  
248.662.5066 Office  
[emil@forwardcommercial.com](mailto:emil@forwardcommercial.com)

