

363 W BIG BEAVER

OFFICE SPACE FOR LEASE

TROY, MI



AVAILABLE:

Suite 200: 2,265 SF

Suite 215: 1,411 SF

USE:

Office

LEASE RATE:

\$19.50/ SF/ YR, Gross + Electric

JOIN TENANTS:

Superior National Bank, Fast Braces, Infusion Associates, IPS Technology Solutions, and more.

LOCATION:

Easy access on W Big Beaver Road across from new DMC Children's Hospital, City offices, and Marriott Hotel. Situated between Fogo de Chao and Even Hotel by IHG. Close to I-75.

SUMMARY:

Suite 200: Second floor office space featuring windows, five offices, waiting room, administrative room, break room and storage room.

Suite 215: Second floor office space with reception, four offices, conference room, and kitchenette.

FORWARD COMMERCIAL GROUP

240 MARTIN STREET, STE 200
BIRMINGHAM, MI 48009
www.forwardcommercial.com

EMIL CHERKASOV

PRINCIPAL BROKER
248.662.5066 OFFICE
emil@forwardcommercial.com



OVERVIEW

363 W BIG BEAVER

ACROSS FROM
DMC CHILDREN'S
HOSPITAL

DEMOGRAPHICS AND TRAFFIC	
POPULATION	261,216 (5 Mile Radius)
MEDIAN HOME VALUE	\$216,309 (5 Mile Radius)
TRAFFIC COUNTS	57,018 CARS DAILY

PROPERTY HIGHLIGHTS

- Great visibility on Big Beaver Rd & NB I-75
- Floor to ceiling windows
- Signage rights
- 286 surface parking spaces
- Reserved parking spaces included

PROPERTY SUMMARY

- 52,636 SF four-story high-end office building
- Renovated 2021 / Built 1978
- 2 Elevators
- Across from DMC Children's Hospital
- Close to Somerset Collection



FORWARD COMMERCIAL GROUP

240 MARTIN STREET, STE 200
BIRMINGHAM, MI 48009
www.forwardcommercial.com

EMIL CHERKASOV

PRINCIPAL BROKER
248.662.5066 OFFICE
emil@forwardcommercial.com



AERIAL MAP

363 W BIG BEAVER

GREAT VISIBILITY
FROM I-75



FORWARD COMMERCIAL GROUP

240 MARTIN STREET, STE 200
BIRMINGHAM, MI 48009
www.forwardcommercial.com

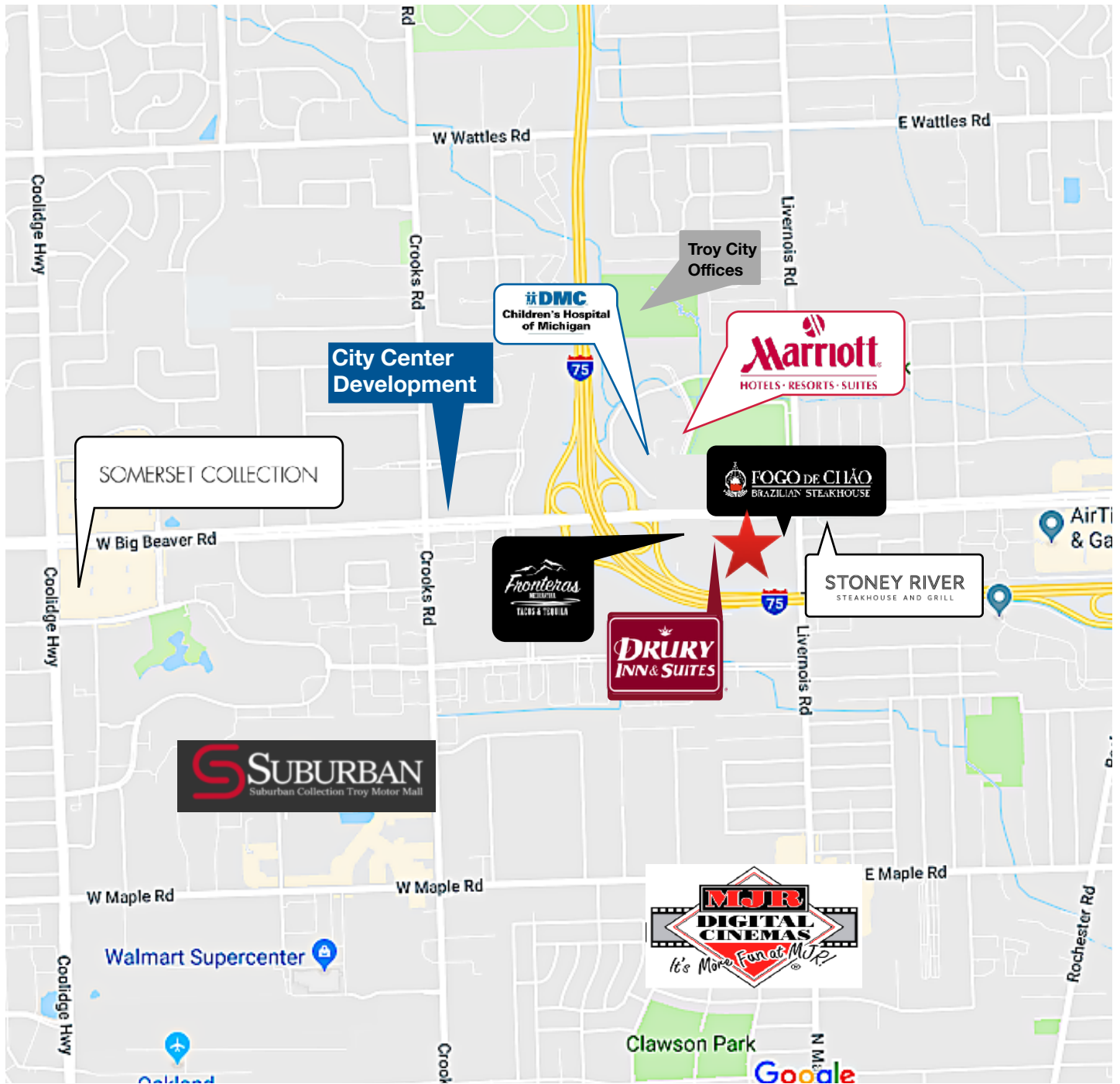
EMIL CHERKASOV

PRINCIPAL BROKER
248.662.5066 OFFICE
emil@forwardcommercial.com



STREET MAP

363 W BIG BEAVER
CENTRAL TROY
LOCATION



FORWARD COMMERCIAL GROUP

240 MARTIN STREET, STE 200
BIRMINGHAM, MI 48009
www.forwardcommercial.com

EMIL CHERKASOV

PRINCIPAL BROKER
248.662.5066 OFFICE
emil@forwardcommercial.com



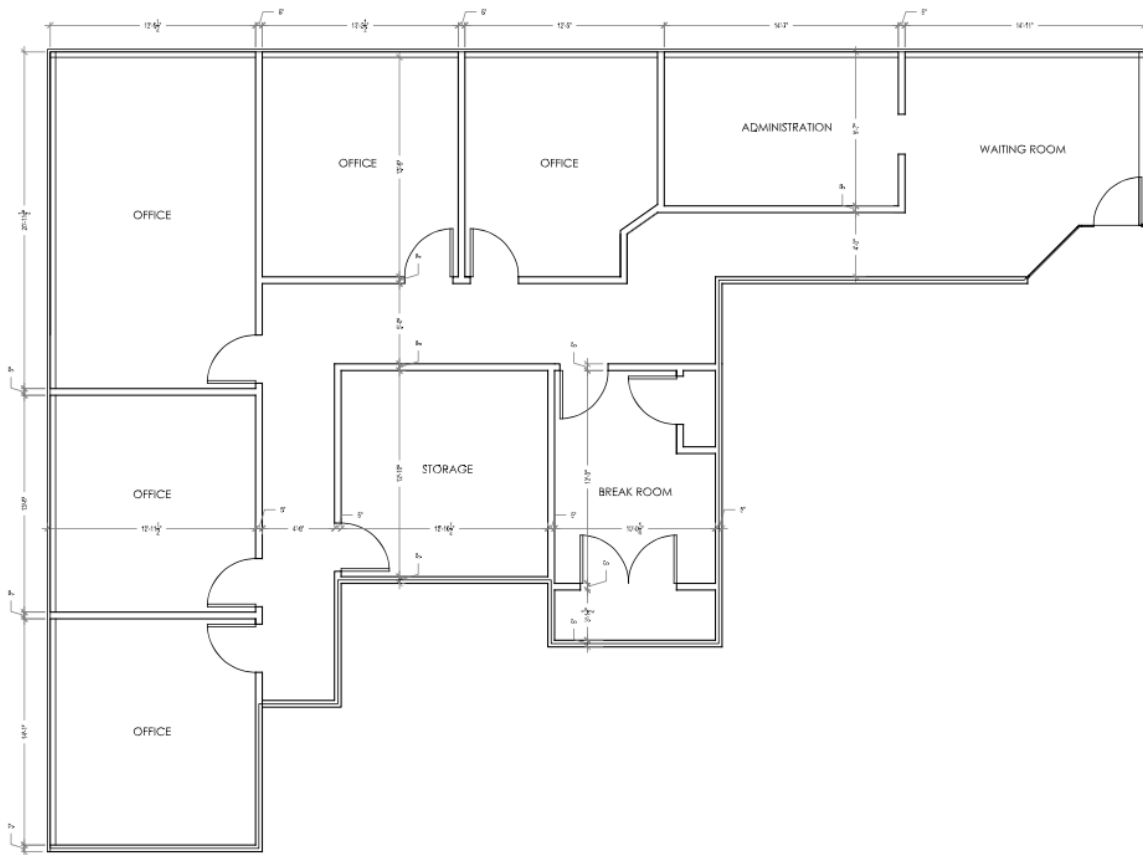
FLOOR PLAN

363 W BIG BEAVER

2,265 SF

FOR LEASE

SUITE 200



UNIT 200 LAYOUT AND SQUARE FOOTAGE PLAN
SCALE: 1/4" = 1'-0"

FORWARD COMMERCIAL GROUP

240 MARTIN STREET, STE 200
BIRMINGHAM, MI 48009
www.forwardcommercial.com

EMIL CHERKASOV

PRINCIPAL BROKER
248.662.5066 OFFICE
emil@forwardcommercial.com



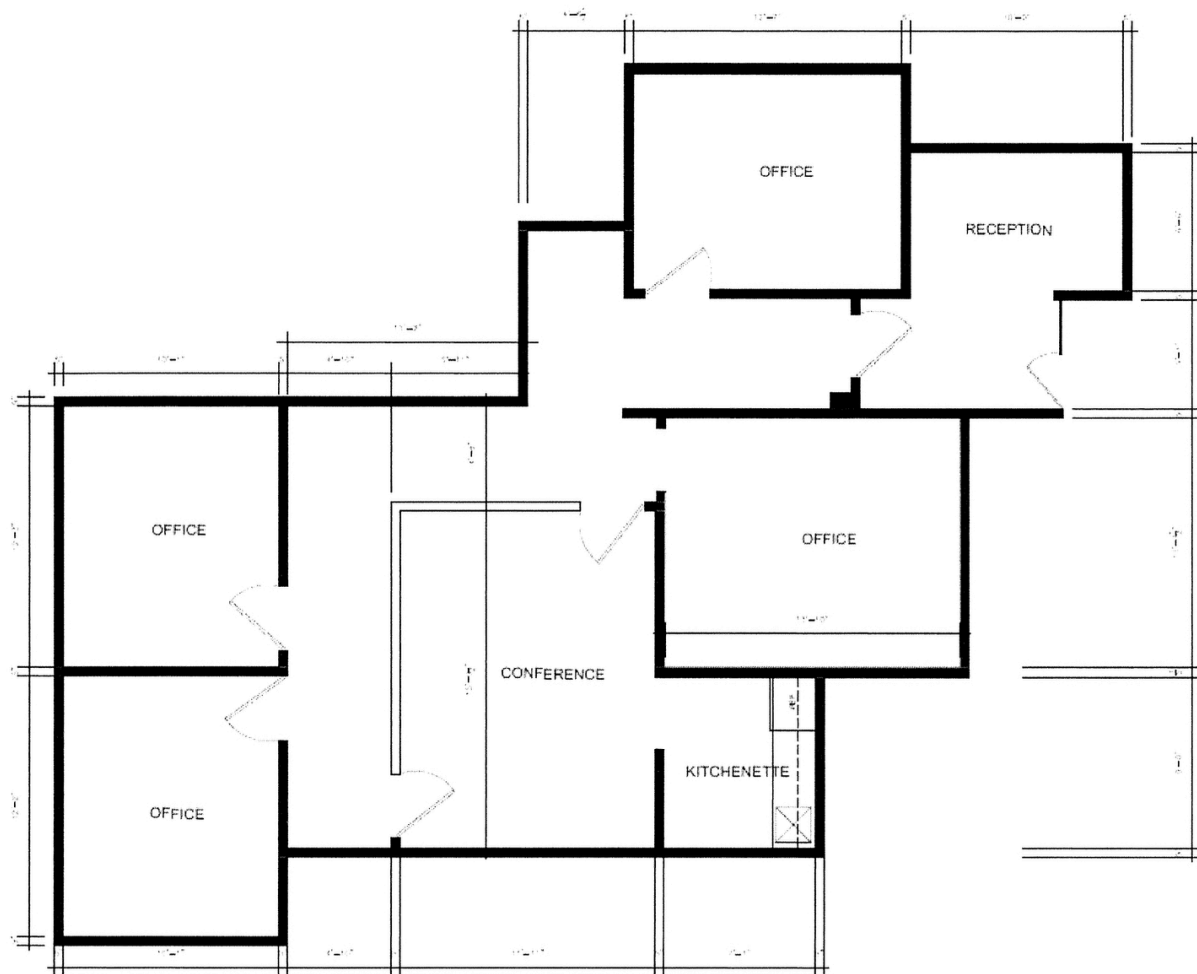
FLOOR PLAN

363 W BIG BEAVER

1,411 SF

FOR LEASE

SUITE 215



FORWARD COMMERCIAL GROUP

240 MARTIN STREET, STE 200
BIRMINGHAM, MI 48009
www.forwardcommercial.com

EMIL CHERKASOV

PRINCIPAL BROKER
248.662.5066 OFFICE
emil@forwardcommercial.com

