

FOR LEASE

1,250 SF

RETAIL / MEDICAL / OFFICE

40000 HAYES ROAD  
CLINTON TWP, MI



**AVAILABLE:**

40070: 1,250 SF

40120: 1,250 SF

**USE:**

Retail / Medical / Office

**LEASE RATE:**

\$12.00/ SF/ YR, Gross + Utilities

**LOCATION:**

On Hayes Road, centrally located between 17 & 18 Mile Roads.

**SUMMARY:**

Newly renovated retail center with new parking lot. High daytime traffic. Ample parking. Signage rights.

**JOIN TENANTS:**

Subway, B&D Nails, Great Lakes Animal Hospital, Golden Gate Restaurant, and more.

**FORWARD COMMERCIAL GROUP**

6785 TELEGRAPH RD, SUITE 250  
BLOOMFIELD HILLS, MI 48301  
[www.forwardcommercial.com](http://www.forwardcommercial.com)

**Emil Cherkasov**

Principal Broker  
248.662.5066 Office  
[emil@forwardcommercial.com](mailto:emil@forwardcommercial.com)

**Geoff Kotila**

Senior Associate  
248.662.5066 Office  
[geoff@forwardcommercial.com](mailto:geoff@forwardcommercial.com)

# OVERVIEW

40000 HAYES RD.  
1,250 SF  
RETAIL / MEDICAL / OFFICE

DEMOGRAPHICS	1 MILE	3 MILE	5 MILE
POPULATION	15,366	107,847	287,041
HOUSEHOLDS	6,234	45,773	116,679
MEDIAN HOME VALUE	\$218,618	\$183,815	\$182,003

## PROPERTY HIGHLIGHTS

- Great visibility
- Located near Lakeside Mall and many other retailers
- Signage rights available
- Ample parking

## PROPERTY SUMMARY

- Price: \$12.00 /SF /YR, Gross + Utilities
- Year Renovated: 2018
- Lot Size: 4 Acres
- Center Size: 21,200 SF



### FORWARD COMMERCIAL GROUP

6785 TELEGRAPH RD, SUITE 250  
BLOOMFIELD HILLS, MI 48301  
[www.forwardcommercial.com](http://www.forwardcommercial.com)

### Emil Cherkasov

Principal Broker  
248.662.5066 Office  
[emil@forwardcommercial.com](mailto:emil@forwardcommercial.com)

### Geoff Kotila

Senior Associate  
248.662.5066 Office  
[geoff@forwardcommercial.com](mailto:geoff@forwardcommercial.com)



# PROPERTY PHOTOS

40000 HAYES RD.

1,250 SF

RETAIL / MEDICAL / OFFICE



## FORWARD COMMERCIAL GROUP

6785 TELEGRAPH RD, SUITE 250  
BLOOMFIELD HILLS, MI 48301  
[www.forwardcommercial.com](http://www.forwardcommercial.com)

## Emil Cherkasov

Principal Broker  
248.662.5066 Office  
[emil@forwardcommercial.com](mailto:emil@forwardcommercial.com)

## Geoff Kotila

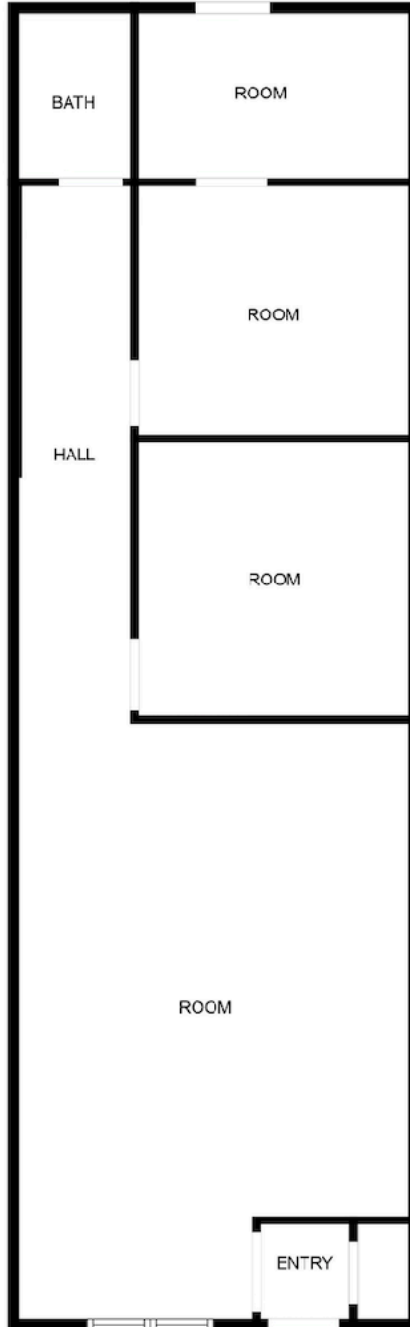
Senior Associate  
248.662.5066 Office  
[geoff@forwardcommercial.com](mailto:geoff@forwardcommercial.com)

40000 HAYES RD.

1,250 SF

SUITE 40700

# FLOOR PLAN

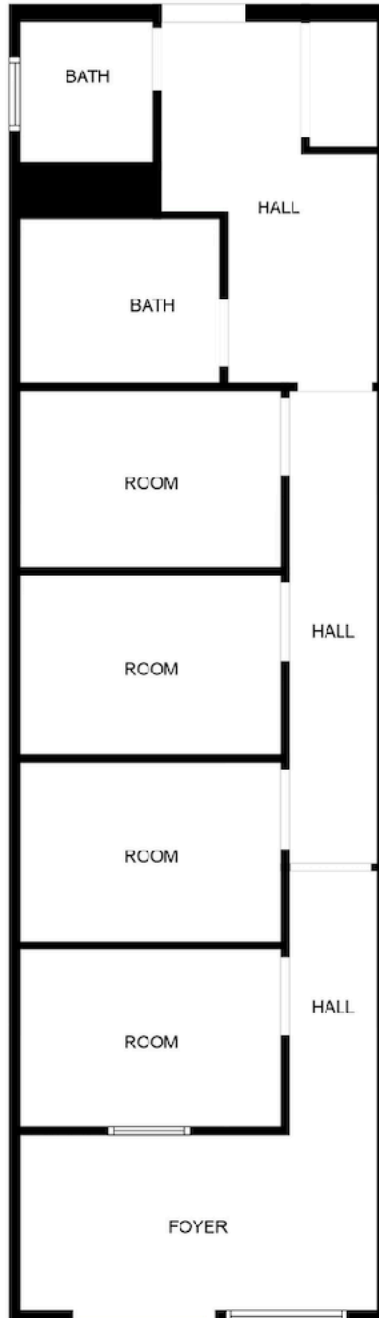


# FLOOR PLAN

40000 HAYES RD.

1,250 SF

SUITE 40120



Forward  
Commercial Group

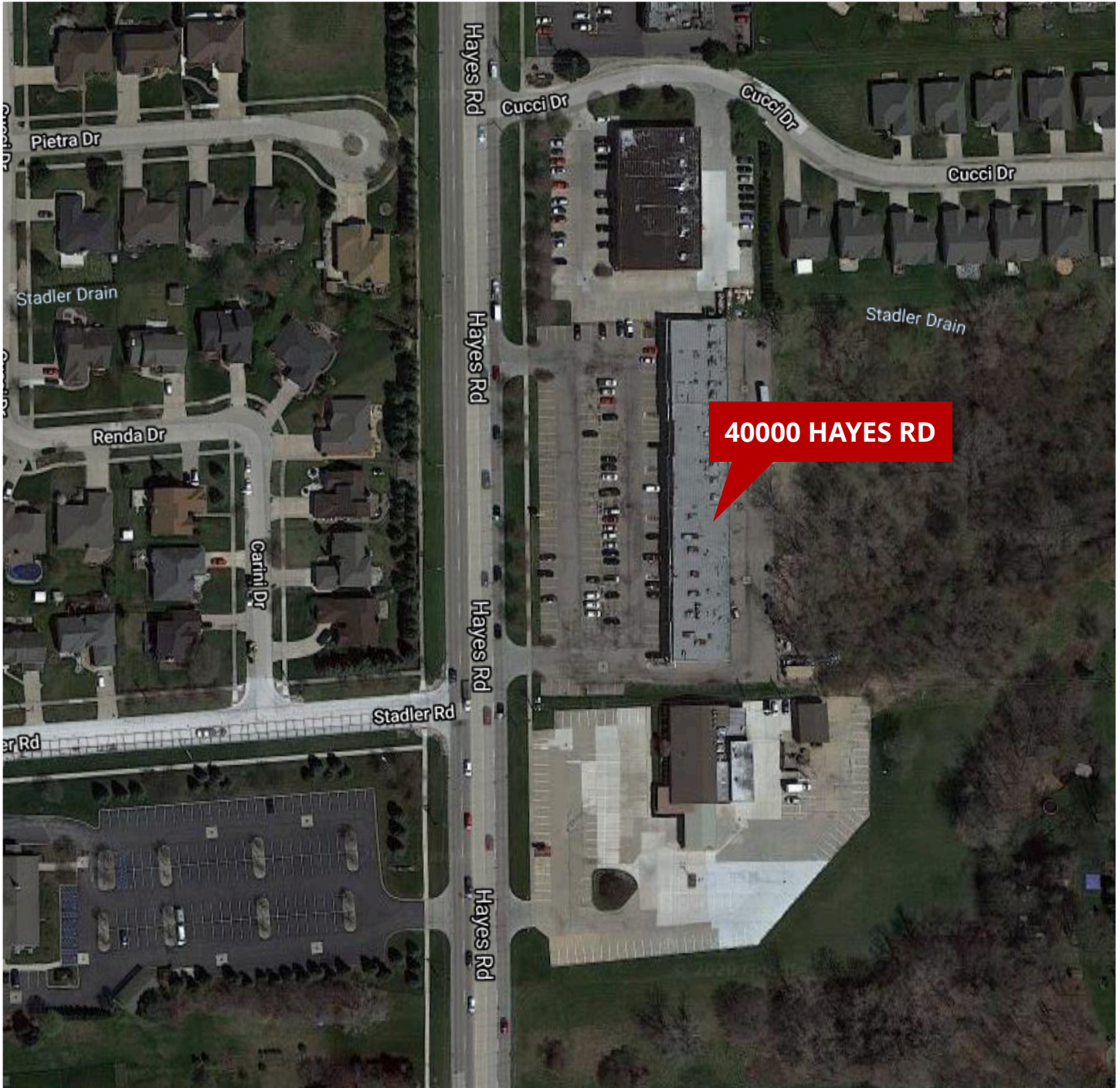
[www.forwardcommercial.com](http://www.forwardcommercial.com)

248.662.5066



# AERIAL MAP

40000 HAYES RD.  
DENSE POPULATION  
HIGH DAYTIME TRAFFIC



## FORWARD COMMERCIAL GROUP

6785 TELEGRAPH RD, SUITE 250  
BLOOMFIELD HILLS, MI 48301  
[www.forwardcommercial.com](http://www.forwardcommercial.com)

## Emil Cherkasov

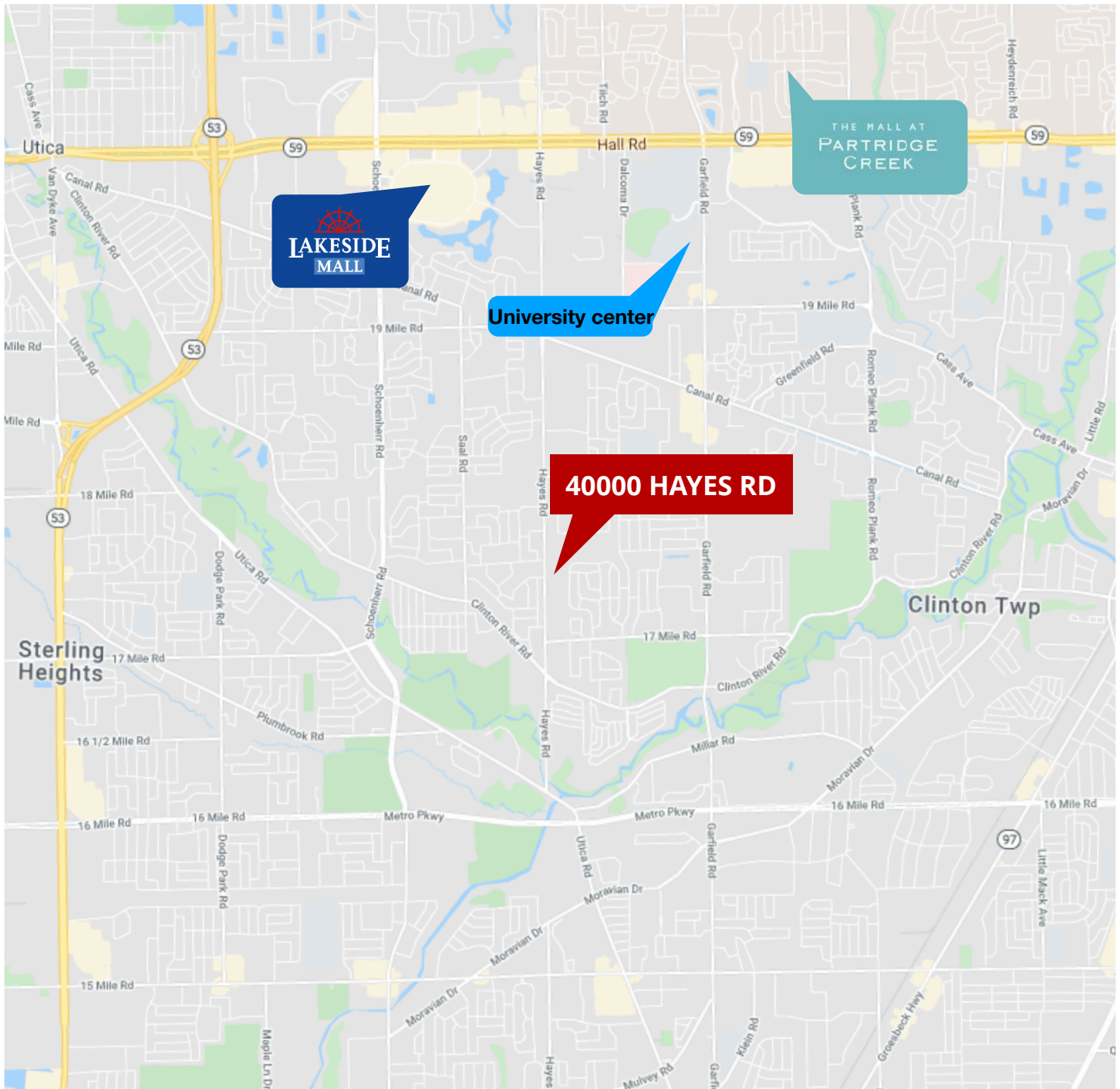
Principal Broker  
248.662.5066 Office  
[emil@forwardcommercial.com](mailto:emil@forwardcommercial.com)

## Geoff Kotila

Senior Associate  
248.662.5066 Office  
[geoff@forwardcommercial.com](mailto:geoff@forwardcommercial.com)

# STREET MAP

40000 HAYES RD.  
CENTRAL LOCATION  
BETWEEN 17 & 18 MILE



## FORWARD COMMERCIAL GROUP

6785 TELEGRAPH RD, SUITE 250  
BLOOMFIELD HILLS, MI 48301  
[www.forwardcommercial.com](http://www.forwardcommercial.com)

## Emil Cherkasov

Principal Broker  
248.662.5066 Office  
[emil@forwardcommercial.com](mailto:emil@forwardcommercial.com)

## Geoff Kotila

Senior Associate  
248.662.5066 Office  
[geoff@forwardcommercial.com](mailto:geoff@forwardcommercial.com)