

FOR LEASE



1,000 SF  
FORMER SALON SPACE  
28142 WOODWARD AVE  
ROYAL OAK, MI



**AVAILABLE:**

1,000 SF

**USES:**

Retail

**LEASE RATE:**

\$22.00/SF/YR, NNN

**JOIN TENANTS:**

K-Pilates and Kumon Learning Center.

**NEARBY:**

Ulta Beauty, Trader Joe's, PetSmart, Sherwin-Williams, AutoZone, O'Reilly Auto Parts, Flagstar Bank, Bank of America, Westborn Market, Crispelli's, and many more.

**LOCATION:**

Excellent high traffic location on northbound Woodward Ave north of 11 Mile Rd.

**SUMMARY:**

Completely renovated exterior. Excellent opportunity on highly sought after northbound Woodward corridor with heavy daytime traffic. Zoned B-1 General Business allows for a wide variety of uses. Location provides easy ingress and egress. 29 shared parking spaces along front and side as well as 2 private spaces in rear of building.

**FORWARD COMMERCIAL GROUP**

240 MARTIN STREET, STE 200  
BIRMINGHAM, MI 48009  
[www.forwardcommercial.com](http://www.forwardcommercial.com)

**EMIL CHERKASOV**

PRINCIPAL BROKER  
248.662.5066 OFFICE  
[emil@forwardcommercial.com](mailto:emil@forwardcommercial.com)

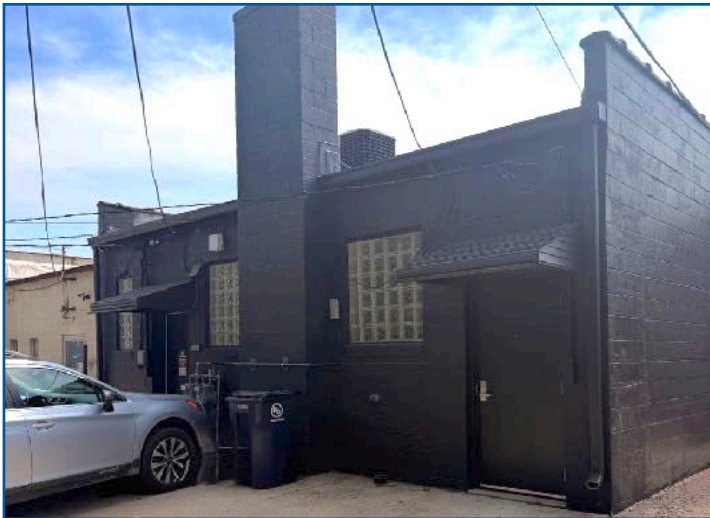


# PHOTOS & DEMOGRAPHICS

28142 WOODWARD AVE

RETAIL

SPACE AVAILABLE



## DEMOGRAPHICS

1 MILE

3 MILES

5 MILES

POPULATION

16,419

143,322

330,885

MEDIAN HOME VALUE

\$279,604

\$224,188

\$191,040

HOUSEHOLDS

7,428

64,249

143,783

## TRAFFIC COUNT

64,051 CARS DAILY - WOODWARD AVE NORTH OF CATALPA

### FORWARD COMMERCIAL GROUP

240 MARTIN STREET, STE 200  
BIRMINGHAM, MI 48009  
[www.forwardcommercial.com](http://www.forwardcommercial.com)

### EMIL CHERKASOV

PRINCIPAL BROKER  
248.662.5066 OFFICE  
[emil@forwardcommercial.com](mailto:emil@forwardcommercial.com)

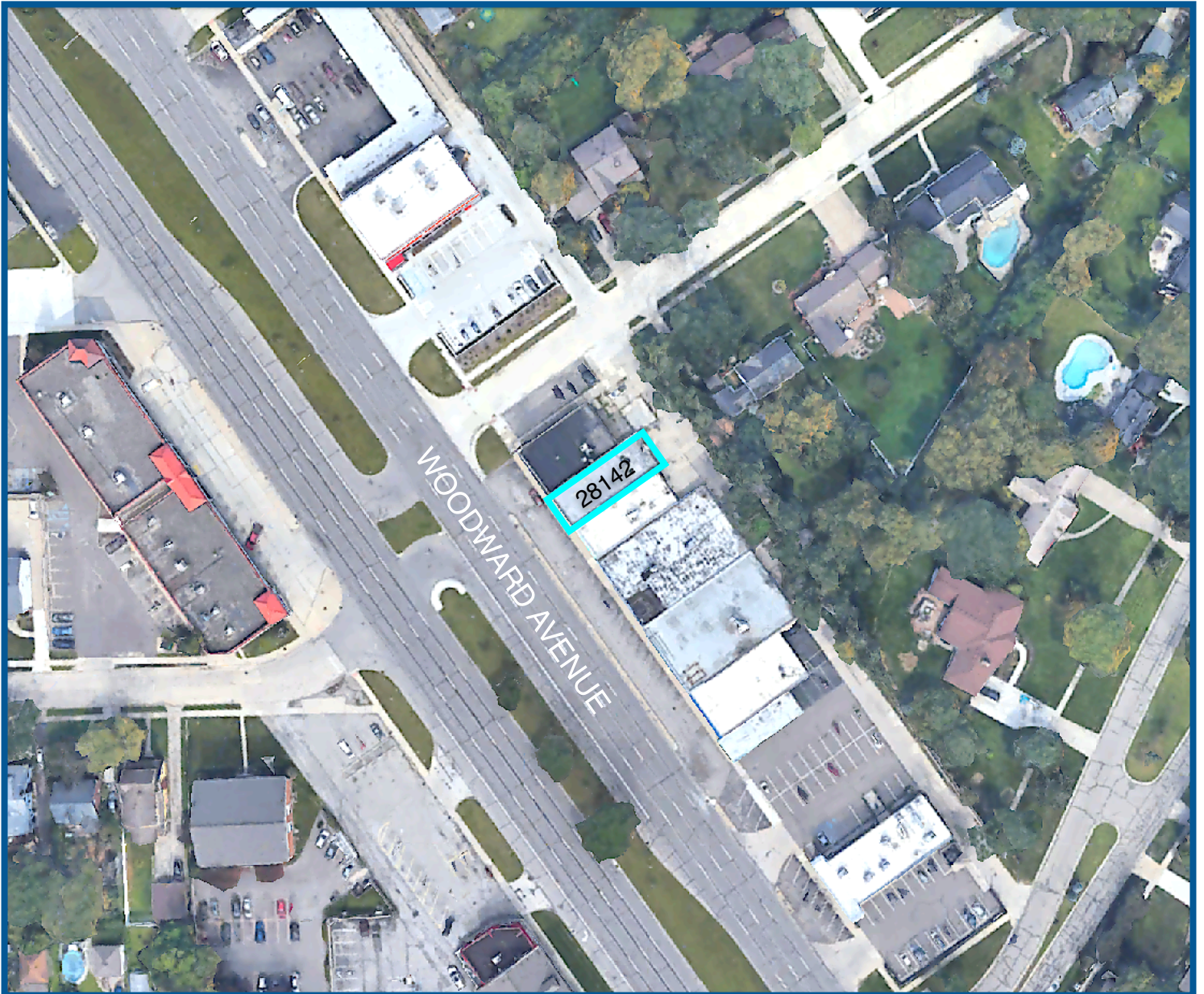


# AERIAL MAP

28142 WOODWARD AVE

1,000 SF

RETAIL SPACE



## FORWARD COMMERCIAL GROUP

240 MARTIN STREET, STE 200  
BIRMINGHAM, MI 48009  
[www.forwardcommercial.com](http://www.forwardcommercial.com)

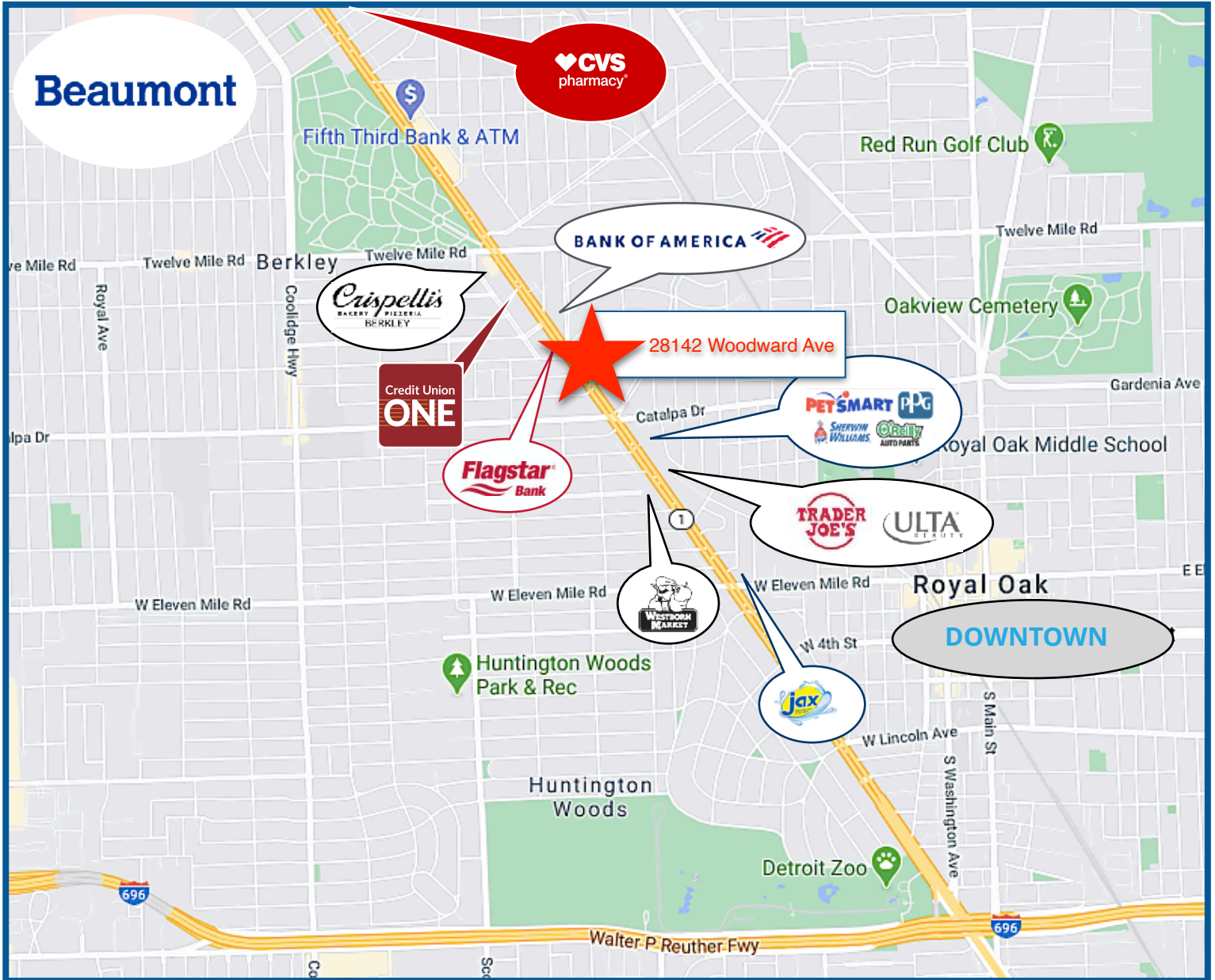
## EMIL CHERKASOV

PRINCIPAL BROKER  
248.662.5066 OFFICE  
[emil@forwardcommercial.com](mailto:emil@forwardcommercial.com)



# STREET MAP

28142 WOODWARD AVE  
HIGH TRAFFIC  
LOCATION



## FORWARD COMMERCIAL GROUP

240 MARTIN STREET, STE 200  
BIRMINGHAM, MI 48009  
[www.forwardcommercial.com](http://www.forwardcommercial.com)

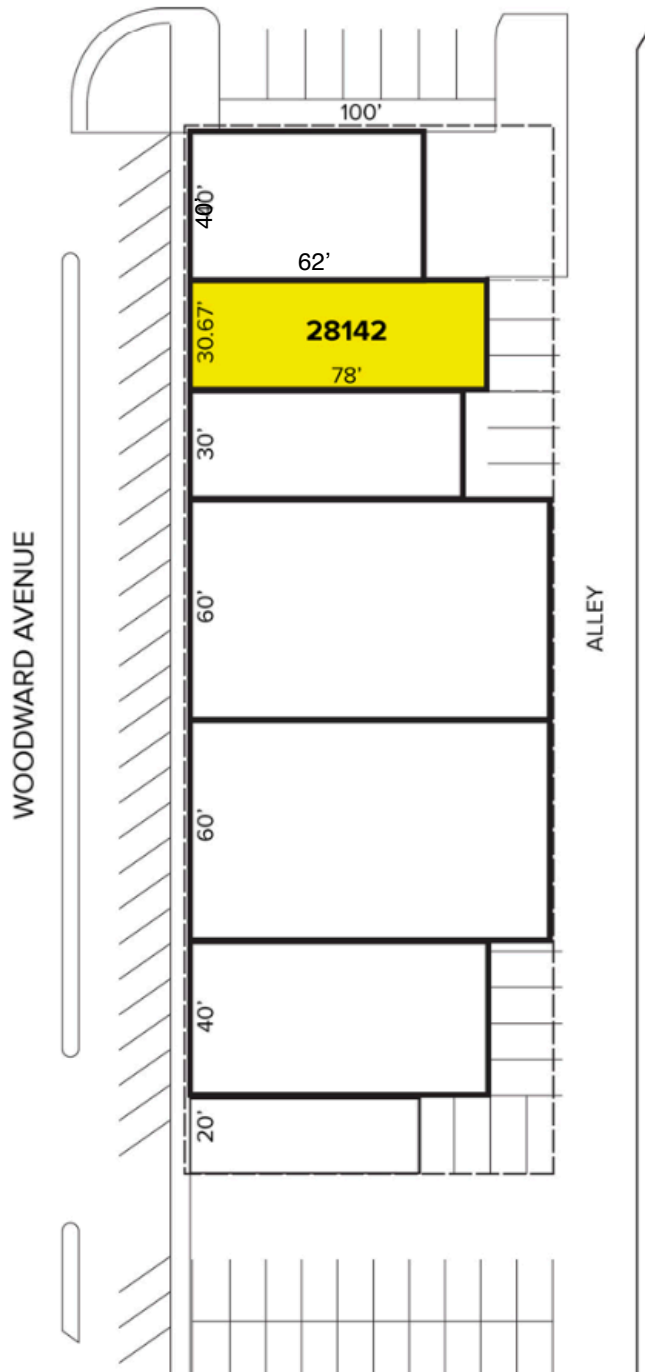
## EMIL CHERKASOV

PRINCIPAL BROKER  
248.662.5066 OFFICE  
[emil@forwardcommercial.com](mailto:emil@forwardcommercial.com)



# SITE MAP

28142 WOODWARD AVE  
2 PRIVATE PARKING  
SPACES IN REAR



## FORWARD COMMERCIAL GROUP

240 MARTIN STREET, STE 200  
BIRMINGHAM, MI 48009  
[www.forwardcommercial.com](http://www.forwardcommercial.com)

## EMIL CHERKASOV

PRINCIPAL BROKER  
248.662.5066 OFFICE  
[emil@forwardcommercial.com](mailto:emil@forwardcommercial.com)

