

42450 W. 12 MILE RD

MEDICAL / OFFICE
FOR LEASE

NOVI, MI 48377



AVAILABLE:

Suite 220 – 1,217 SF Suite 225 – 1,361 SF
Suite 300 – 1,727 SF Suite 310 – 1,402 SF
Suites 300 and 310 can be combined to offer: 3,129 SF

USES:

Office / Medical

LEASE RATE:

\$22.50/SF/YR, Gross + Utilities

NEARBY TENANTS:

Twelve Oaks Mall, Yanfeng Automotive Interiors, Baronette Renaissance Detroit Hotel, McDonald's, The Cheesecake Factory, MSU Tollgate Farms, and many more.

LOCATION:

Located on Twelve Mile Road east of Novi Road and across from Twelve Oaks Mall.

SUMMARY:

Newly Renovated! Under New Ownership and Management. 25,500 SF building in highly desirable location across from Twelve Oaks Mall. Move-in ready office and medical suites. Near freeway I-96, M5, I-696, and I-275. Ample parking. Signage rights available.

FORWARD COMMERCIAL GROUP

240 MARTIN STREET, SUITE 200
BIRMINGHAM, MI 48009
www.forwardcommercial.com

EMIL CHERKASOV

Principal Broker
248.662.5066 Office
emil@forwardcommercial.com



OVERVIEW

42450 W. 12 MILE RD
MEDICAL / OFFICE
FOR LEASE

DEMOGRAPHICS	1 MILE	3 MILE	5 MILE
POPULATION	5,208	58,486	169,997
HOUSEHOLDS	2,074	25,538	71,759
AVG HH INCOME	\$118,399	\$116,445	\$122,539
TRAFFIC COUNTS	25,058 CARS DAILY		

PROPERTY HIGHLIGHTS

- Lots of windows / natural light
- Entrances in front and rear
- Ample parking
- Signage right available

PROPERTY SUMMARY

- Recently Renovated
- 25,500 SF three-story office/medical building
- Built 1988
- Near I-96, M5, I-696, I-275



FORWARD COMMERCIAL GROUP

240 MARTIN STREET, SUITE 200
BIRMINGHAM, MI 48009
www.forwardcommercial.com

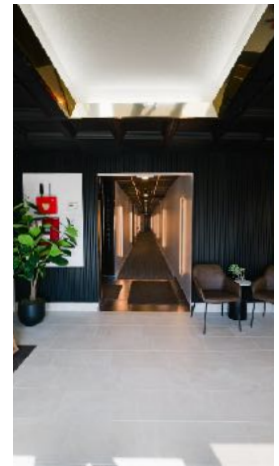
EMIL CHERKASOV

Principal Broker
248.662.5066 Office
emil@forwardcommercial.com



INTERIOR PHOTOS

42450 W. 12 MILE RD
OFFICE / MEDICAL
FOR LEASE



FORWARD COMMERCIAL GROUP
240 MARTIN STREET, SUITE 200
BIRMINGHAM, MI 48009
www.forwardcommercial.com

EMIL CHERKASOV
Principal Broker
248.662.5066 Office
emil@forwardcommercial.com



EXTERIOR PHOTOS

42450 W. 12 MILE RD
OFFICE / MEDICAL
FOR LEASE



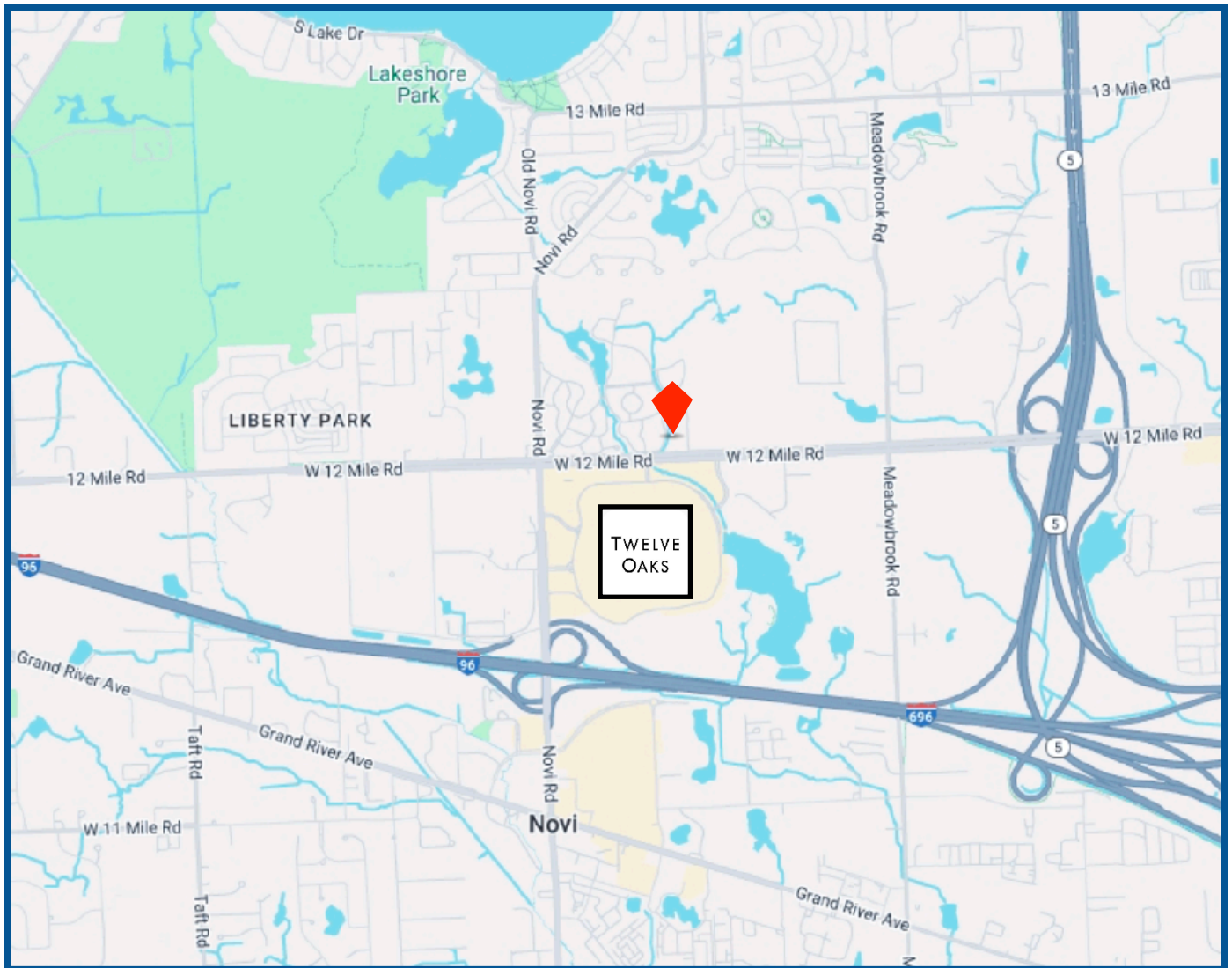
FORWARD COMMERCIAL GROUP
240 MARTIN STREET, SUITE 200
BIRMINGHAM, MI 48009
www.forwardcommercial.com

EMIL CHERKASOV
Principal Broker
248.662.5066 Office
emil@forwardcommercial.com



STREET MAP

42450 W. 12 MILE RD
MEDICAL / OFFICE
FOR LEASE



FORWARD COMMERCIAL GROUP
240 MARTIN STREET, SUITE 200
BIRMINGHAM, MI 48009
www.forwardcommercial.com

EMIL CHERKASOV
Principal Broker
248.662.5066 Office
emil@forwardcommercial.com



AERIAL MAP

42450 W. 12 MILE RD
MEDICAL / OFFICE
FOR LEASE



FORWARD COMMERCIAL GROUP
240 MARTIN STREET, SUITE 200
BIRMINGHAM, MI 48009
www.forwardcommercial.com

EMIL CHERKASOV
Principal Broker
248.662.5066 Office
emil@forwardcommercial.com

