

FOR LEASE

1,250 SF

RETAIL / MEDICAL / OFFICE

40000 HAYES ROAD
CLINTON TWP, MI



AVAILABLE:

Space A: 1,250 SF

USE:

Retail / Medical / Office

LEASE RATE:

\$12.00/ SF/ YR, Gross + Utilities

JOIN TENANTS:

Subway, B&D Nails, Great Lakes Animal Hospital, Golden Gate Restaurant, and more.

LOCATION:

On Hayes Road, centrally located between 17 & 18 Mile Roads.

SUMMARY:

Space A: Great space consisting of: 9' x 10' office, 18' x 12' back room / conference room, rest room, storage closet, utility closet. Suite can be reconfigured.

Newly renovated retail center with new parking lot. High daytime traffic. Ample parking. Signage rights.

FORWARD COMMERCIAL GROUP

6785 TELEGRAPH RD, SUITE 250
BLOOMFIELD HILLS, MI 48301
www.forwardcommercial.com

Emil Cherkasov

Principal Broker
248.662.5066 Office
emil@forwardcommercial.com

Geoff Kotila

Senior Associate
248.662.5066 Office
geoff@forwardcommercial.com

OVERVIEW

40000 HAYES RD.
1,250 SF
RETAIL / MEDICAL / OFFICE

DEMOGRAPHICS	1 MILE	3 MILE	5 MILE
POPULATION	15,366	107,847	287,041
HOUSEHOLDS	6,234	45,773	116,679
MEDIAN HOME VALUE	\$218,618	\$183,815	\$182,003

PROPERTY HIGHLIGHTS

- Great visibility
- Located near Lakeside Mall and many other retailers
- Signage rights available
- Ample parking

PROPERTY SUMMARY

- Price: \$12.00 /SF /YR, Gross + Utilities
- Year Renovated: 2018
- Lot Size: 4 Acres
- Center Size: 21,200 SF



FORWARD COMMERCIAL GROUP

6785 TELEGRAPH RD, SUITE 250
BLOOMFIELD HILLS, MI 48301
www.forwardcommercial.com

Emil Cherkasov

Principal Broker
248.662.5066 Office
emil@forwardcommercial.com

Geoff Kotila

Senior Associate
248.662.5066 Office
geoff@forwardcommercial.com

INTERIOR PHOTOS

40000 HAYES RD.
SPACE A: 1,250 SF
RETAIL / MEDICAL / OFFICE



FORWARD COMMERCIAL GROUP
6785 TELEGRAPH RD, SUITE 250
BLOOMFIELD HILLS, MI 48301
www.forwardcommercial.com

Emil Cherkasov
Principal Broker
248.662.5066 Office
emil@forwardcommercial.com

Geoff Kotila
Senior Associate
248.662.5066 Office
geoff@forwardcommercial.com

PROPERTY PHOTOS

40000 HAYES RD.

1,250 SF

RETAIL / MEDICAL / OFFICE



FORWARD COMMERCIAL GROUP

6785 TELEGRAPH RD, SUITE 250
BLOOMFIELD HILLS, MI 48301
www.forwardcommercial.com

Emil Cherkasov

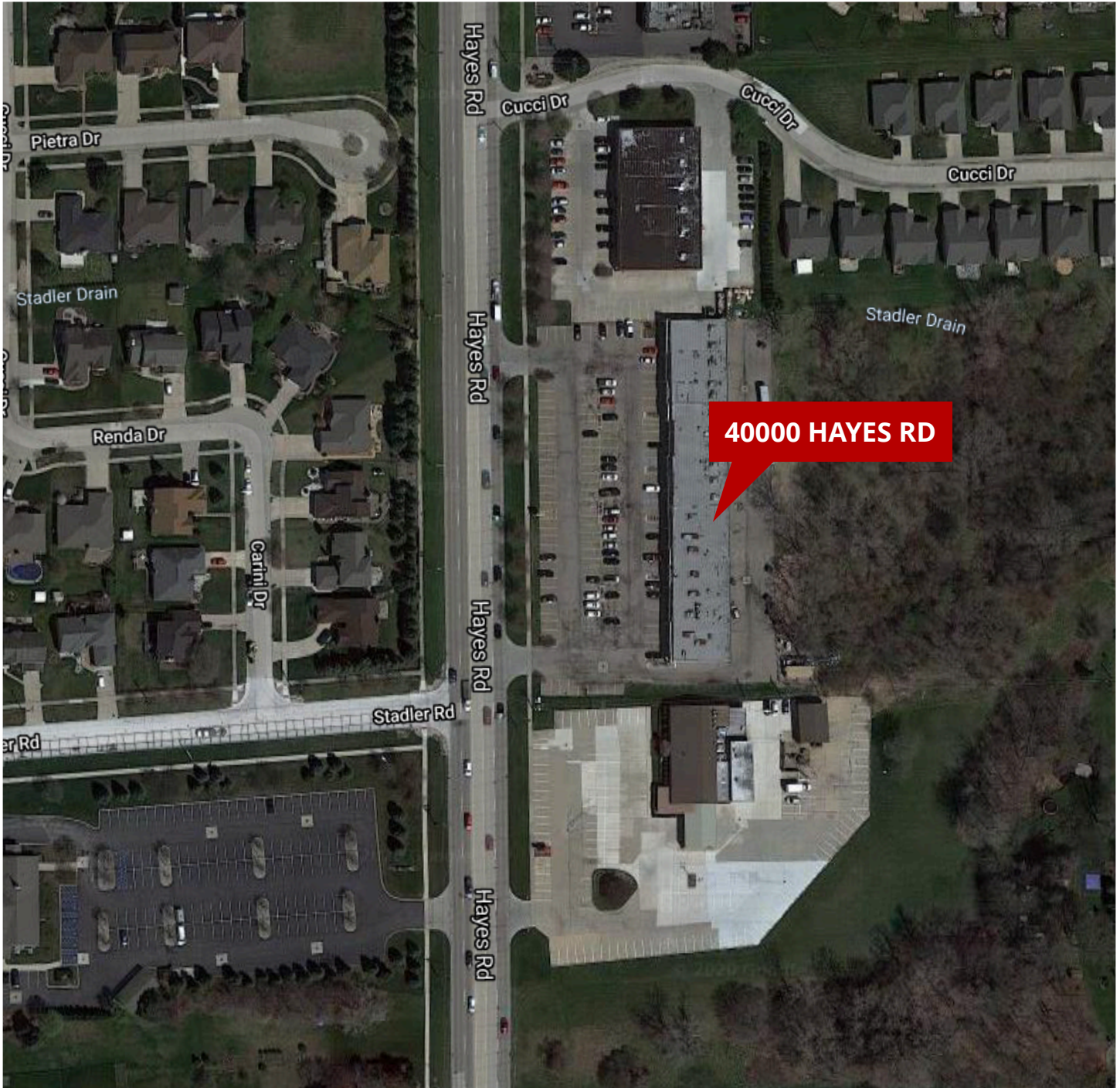
Principal Broker
248.662.5066 Office
emil@forwardcommercial.com

Geoff Kotila

Senior Associate
248.662.5066 Office
geoff@forwardcommercial.com

AERIAL MAP

40000 HAYES RD.
DENSE POPULATION
HIGH DAYTIME TRAFFIC



FORWARD COMMERCIAL GROUP

6785 TELEGRAPH RD, SUITE 250
BLOOMFIELD HILLS, MI 48301
www.forwardcommercial.com

Emil Cherkasov

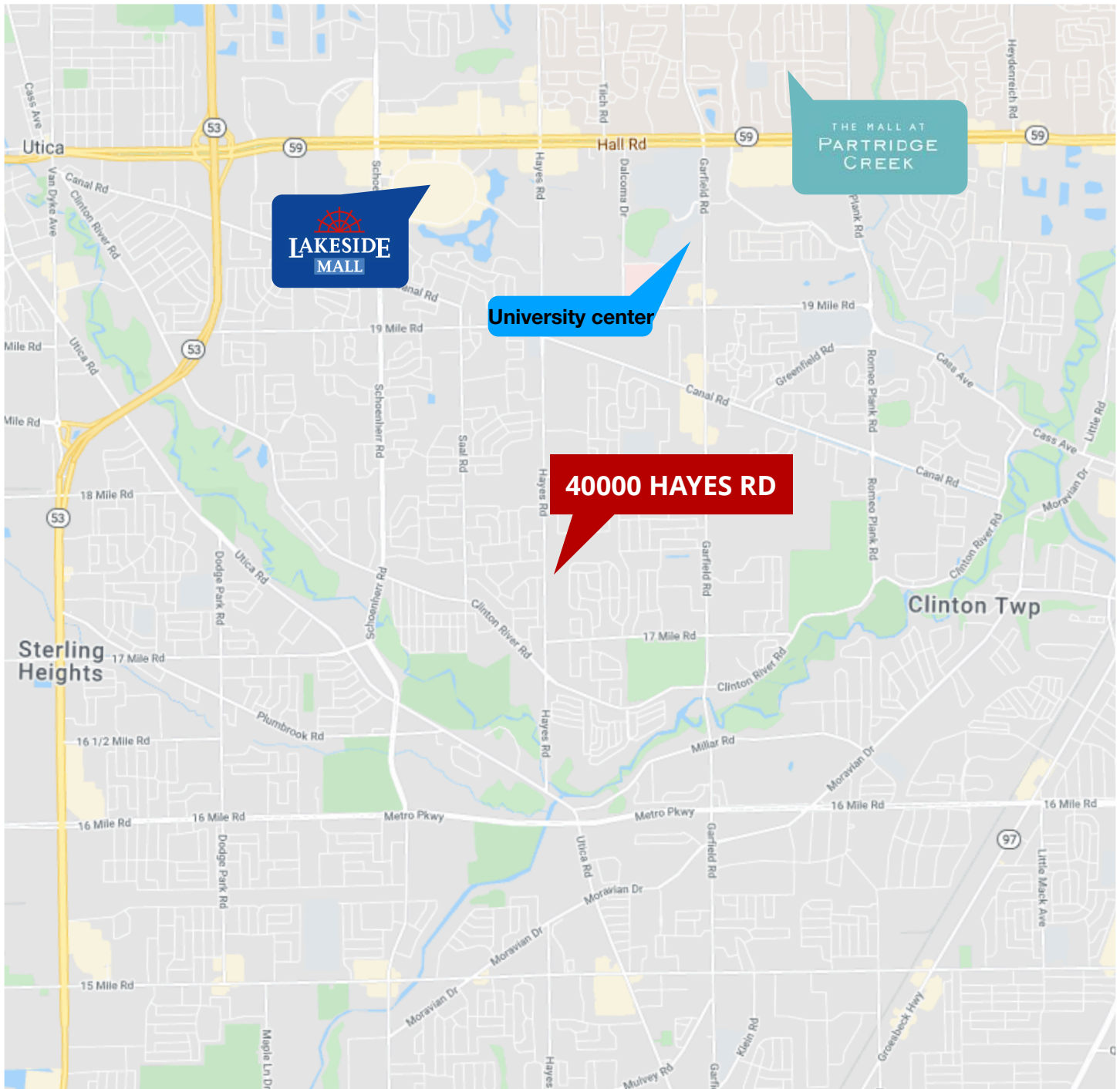
Principal Broker
248.662.5066 Office
emil@forwardcommercial.com

Geoff Kotila

Senior Associate
248.662.5066 Office
geoff@forwardcommercial.com

STREET MAP

40000 HAYES RD.
CENTRAL LOCATION
BETWEEN 17 & 18 MILE



FORWARD COMMERCIAL GROUP

6785 TELEGRAPH RD, SUITE 250
BLOOMFIELD HILLS, MI 48301
www.forwardcommercial.com

Emil Cherkasov

Principal Broker
248.662.5066 Office
emil@forwardcommercial.com

Geoff Kotila

Senior Associate
248.662.5066 Office
geoff@forwardcommercial.com