

FOR LEASE

**RETAIL BUILDING
W/ DRIVE-THRU**

**33075 23 MILE RD
CHESTERFIELD, MI**



AVAILABLE:

3,200 SF

USE:

Retail

LEASE RATE:

TBD

Area Tenants:

Premier Lanes, Dollar General, Salvation Army, Champion Health Club, Elite Ink, Comerica Bank, and more.

LOCATION:

On 23 mile Rd just East of Sass Rd. Approximately 1.9 miles from I-94.

SUMMARY:

Newly renovated freestanding building with drive-thru available. Former TCF Bank branch. Located on the outlet of Bayside Center. Less than 2 miles from I-94. Great exposure and visibility with pole sign. Ample dedicated parking (35+ spaces) with additional for overflow. New easement in-place.

FORWARD COMMERCIAL GROUP
6785 TELEGRAPH RD, SUITE 250
BLOOMFIELD HILLS, MI 48301
www.forwardcommercial.com

Emil Cherkasov
Principal Broker
248.662.5066 Office
emil@forwardcommercial.com



OVERVIEW

33075 23 MILE RD
3,200 SF
RETAIL BUILDING

DEMOGRAPHICS	1 MILE	3 MILE	5 MILE
POPULATION	8,752	44,772	69,190
HOUSEHOLDS	3,300	16,775	25,278
MEDIAN HOME VALUE	\$194,393	\$202,979	\$187,069
TRAFFIC COUNTS	35,543 Cars Daily		

PROPERTY HIGHLIGHTS

- Great exposure and pole signage
- Drive-thru available
- Easy access via I-94
- 35+ parking spaces
- Rough plumbing, electrical, HVAC complete, ready for finishes.

PROPERTY SUMMARY

- Price: TBD
- Year Renovated: 2019
- Lot Size: 0.34 Acres
- 3,200 SF retail building
- Zoning: C-1



FORWARD COMMERCIAL GROUP
6785 TELEGRAPH RD, SUITE 250
BLOOMFIELD HILLS, MI 48301
www.forwardcommercial.com

Emil Cherkasov
Principal Broker
248.662.5066 Office
emil@forwardcommercial.com



PROPERTY PHOTOS

33075 23 MILE RD

3,200 SF

RETAIL BUILDING



FORWARD COMMERCIAL GROUP
6785 TELEGRAPH RD, SUITE 250
BLOOMFIELD HILLS, MI 48301
www.forwardcommercial.com

Emil Cherkasov
Principal Broker
248.662.5066 Office
emil@forwardcommercial.com



AERIAL MAP

33075 23 MILE RD

3,200 SF

RETAIL BUILDING



FORWARD COMMERCIAL GROUP
6785 TELEGRAPH RD, SUITE 250
BLOOMFIELD HILLS, MI 48301
www.forwardcommercial.com

Emil Cherkasov
Principal Broker
248.662.5066 Office
emil@forwardcommercial.com

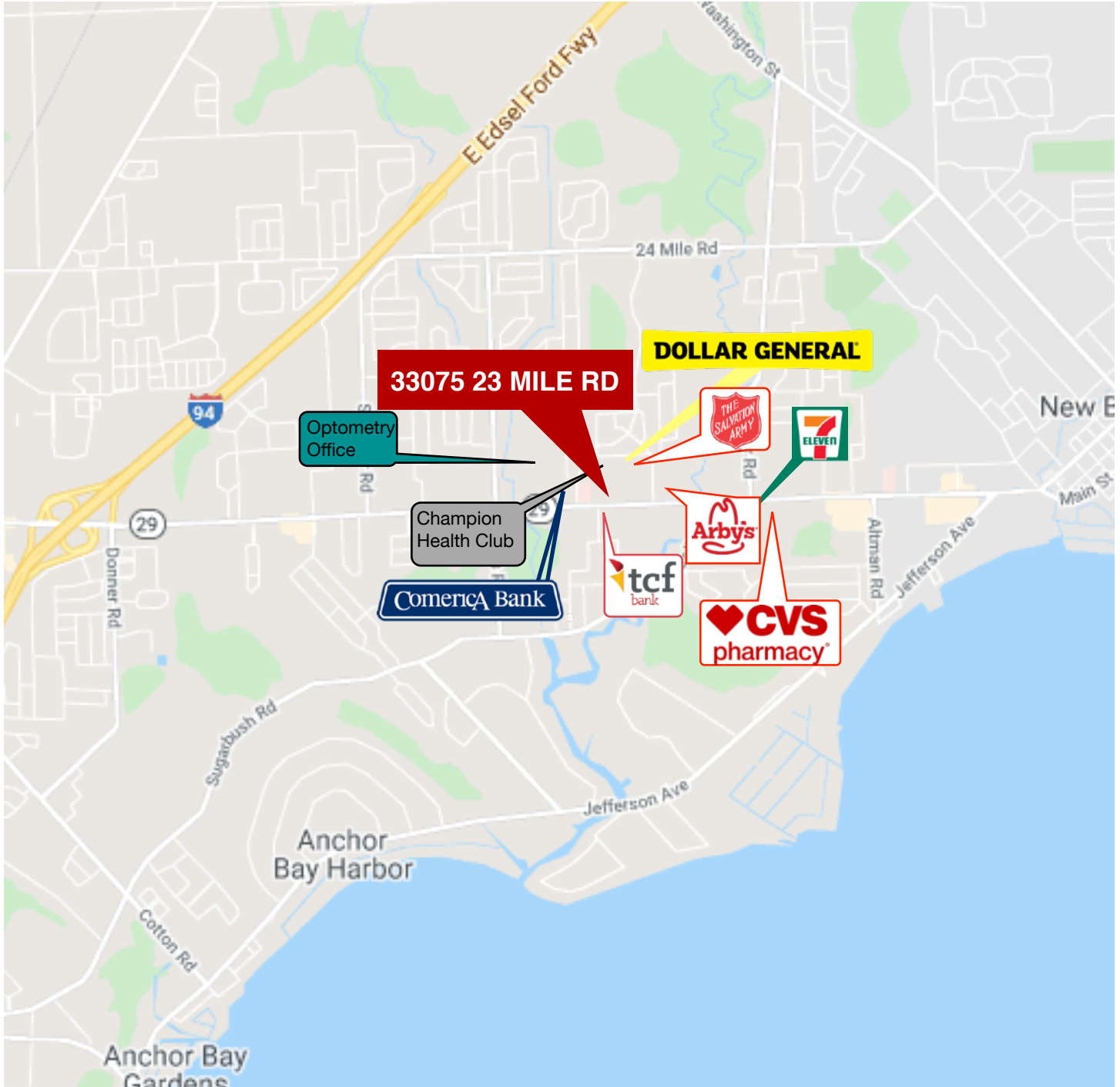


STREET MAP

33075 23 MILE RD

3,200 SF

RETAIL BUILDING



FORWARD COMMERCIAL GROUP
6785 TELEGRAPH RD, SUITE 250
BLOOMFIELD HILLS, MI 48301
www.forwardcommercial.com

Emil Cherkasov
Principal Broker
248.662.5066 Office
emil@forwardcommercial.com

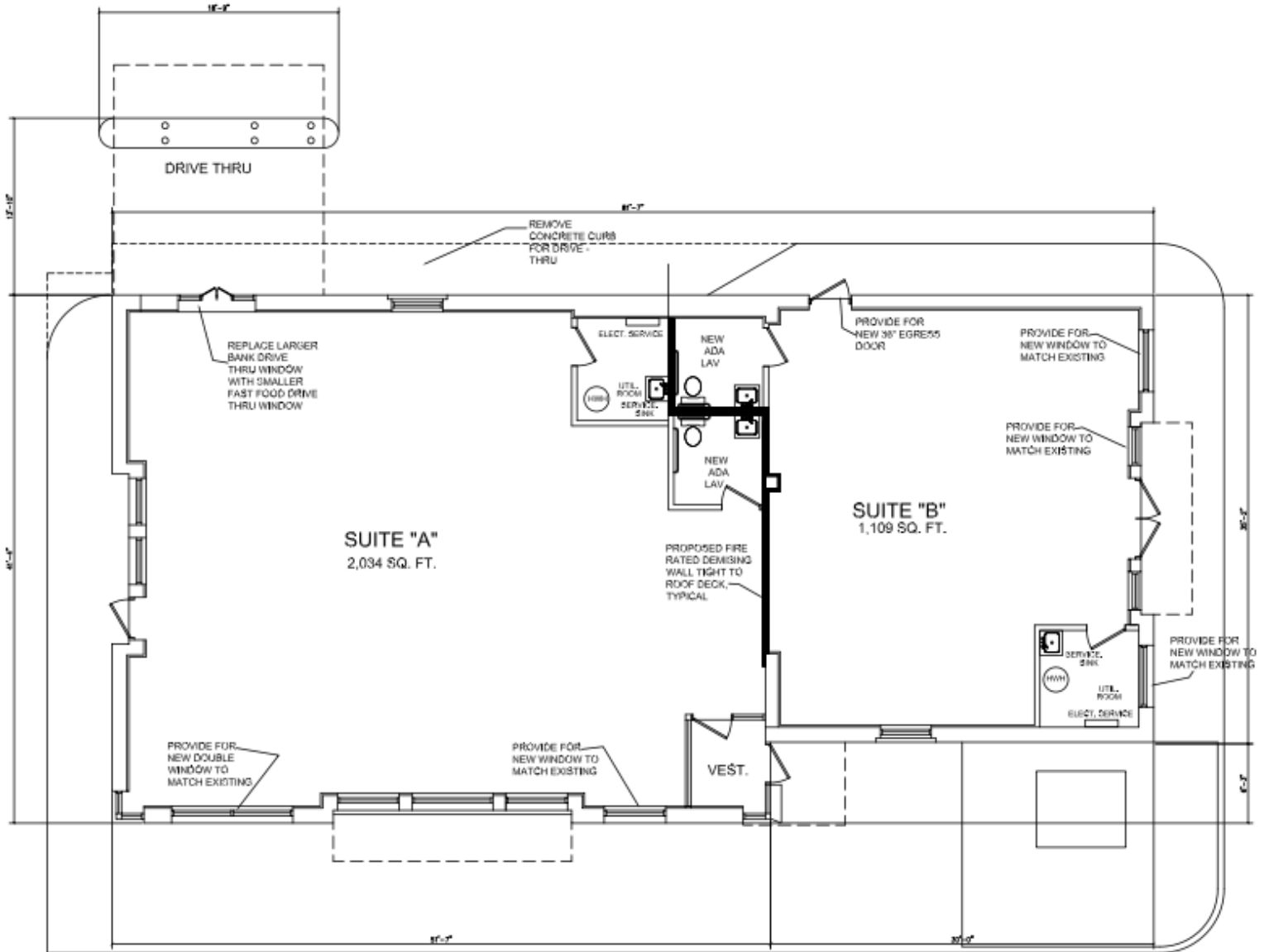


FLOOR PLAN

33075 23 MILE RD

3,200 SF

RETAIL BUILDING



FORWARD COMMERCIAL GROUP
6785 TELEGRAPH RD, SUITE 250
BLOOMFIELD HILLS, MI 48301
www.forwardcommercial.com

Emil Cherkasov
Principal Broker
248.662.5066 Office
emil@forwardcommercial.com

